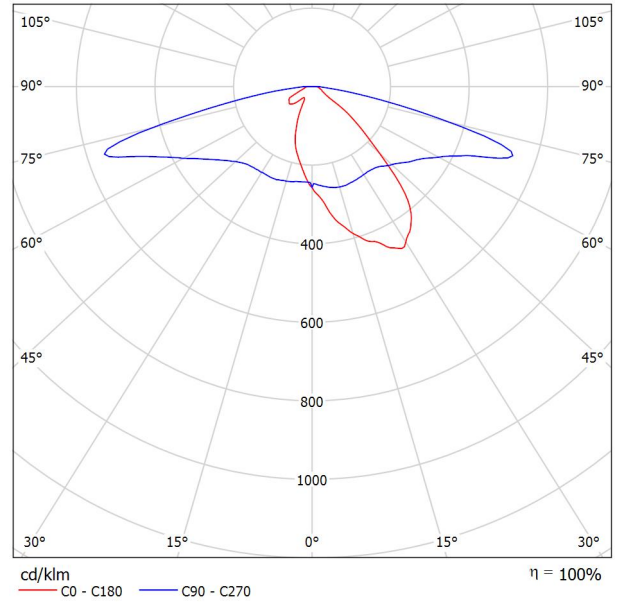


Operator
 Telephone
 Fax
 e-Mail

/ Luminaire Data Sheet

See our luminaire catalog for an image of the luminaire.

Luminous emittance 1:



Luminaire classification according to CIE: 100
 CIE flux code: 40 71 93 100 100

Due to missing symmetry properties, no UGR table can be displayed for this luminaire.

Operator
Telephone
Fax
e-Mail

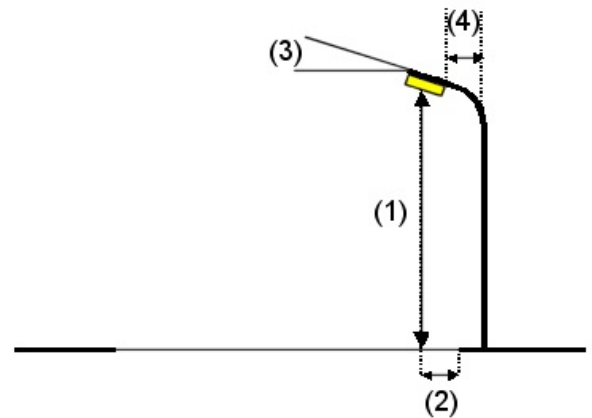
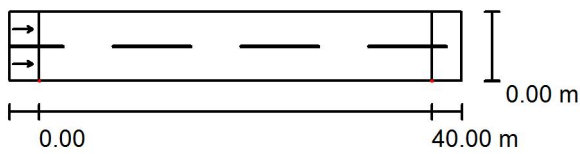
街道 1 / Planning data

Street Profile

道路 1 (Width: 7.000 m, Number of lanes: 2, tarmac: R3, q0: 0.070)

Maintenance factor: 0.80

Luminaire Arrangements



Luminaire:	
Luminous flux (Luminaire):	9999 lm
Luminous flux (Lamps):	10000 lm
Luminaire Wattage:	0.0 W
Arrangement:	Single row, bottom
Pole Distance:	40.000 m
Mounting Height (1):	10.000 m
Height:	9.900 m
Overhang (2):	0.000 m
Boom Angle (3):	0.0 °
Boom Length (4):	0.000 m

Maximum luminous intensities

at 70°:	788 cd/klm
at 80°:	184 cd/klm
at 90°:	27 cd/klm

Any direction forming the specified angle from the downward vertical, with the luminaire installed for use.

No luminous intensities above 90°.

Arrangement complies with luminous intensity class G1.

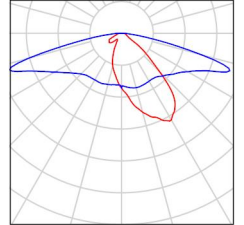
Arrangement complies with glare index class D.2.

Operator
Telephone
Fax
e-Mail

街道 1 / Luminaire parts list

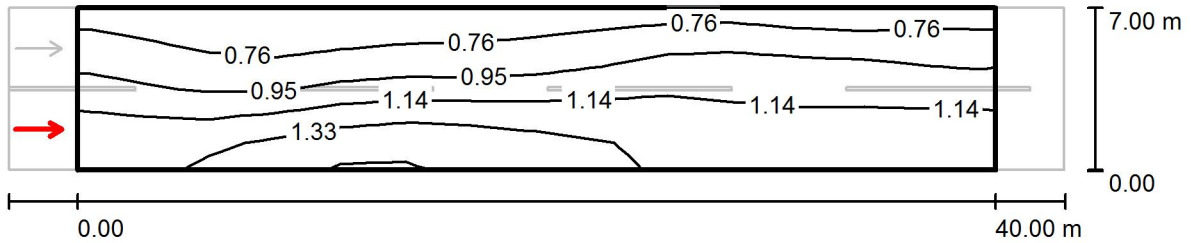
(Type 1)
Article No.:
Luminous flux (Luminaire): 9999 lm
Luminous flux (Lamps): 10000 lm
Luminaire Wattage: 0.0 W
Luminaire classification according to CIE: 100
CIE flux code: 40 71 93 100 100
Fitting: 1 x 使用者定义 (Correction Factor 1.000).

See our luminaire catalog for an image of the luminaire.



Operator
Telephone
Fax
e-Mail

街道 1 / 评估区域 道路 1 / 观察器 1 / Isolines (L)



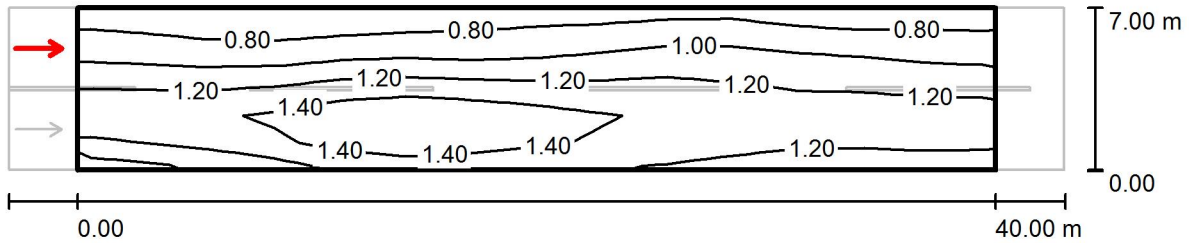
Values in Candela/m², Scale 1 : 329

Grid: 14 x 6 Points
Observer Position: (-60.000 m, 1.750 m, 1.500 m)
tarmac: R3, q0: 0.070

	L_{av} [cd/m ²]	U0	UI	TI [%]
Calculated values:	1.04	0.57	0.86	14
Required values according to class ME4a:	≥ 0.75	≥ 0.40	≥ 0.60	≤ 15
Fulfilled/Not fulfilled:	✓	✓	✓	✓

Operator
Telephone
Fax
e-Mail

街道 1 / 评估区域 道路 1 / 观察器 2 / Isolines (L)



Values in Candela/m², Scale 1 : 329

Grid: 14 x 6 Points
Observer Position: (-60.000 m, 5.250 m, 1.500 m)
tarmac: R3, q0: 0.070

	L_{av} [cd/m ²]	U0	UI	TI [%]
Calculated values:	1.13	0.57	0.79	11
Required values according to class ME4a:	≥ 0.75	≥ 0.40	≥ 0.60	≤ 15
Fulfilled/Not fulfilled:	✓	✓	✓	✓