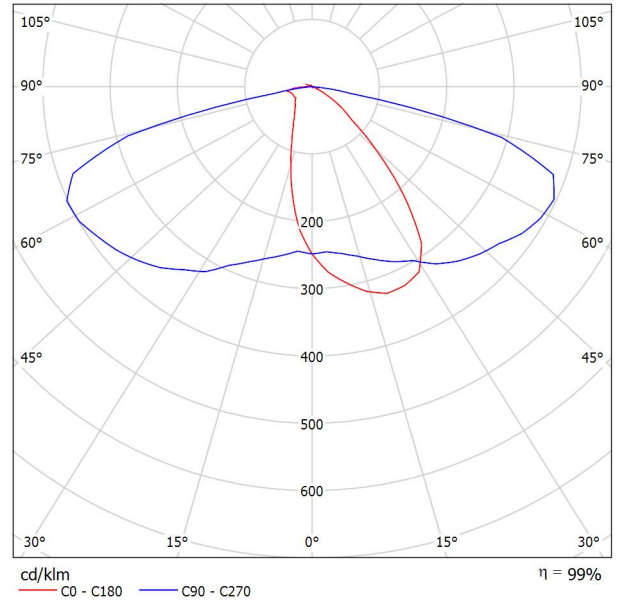


Operator
 Telephone
 Fax
 e-Mail

/ Luminaire Data Sheet

See our luminaire catalog for an image of the luminaire.

Luminous emittance 1:



Luminaire classification according to CIE: 99
 CIE flux code: 37 70 94 99 99

Due to missing symmetry properties, no UGR table can be displayed for this luminaire.

Operator
Telephone
Fax
e-Mail

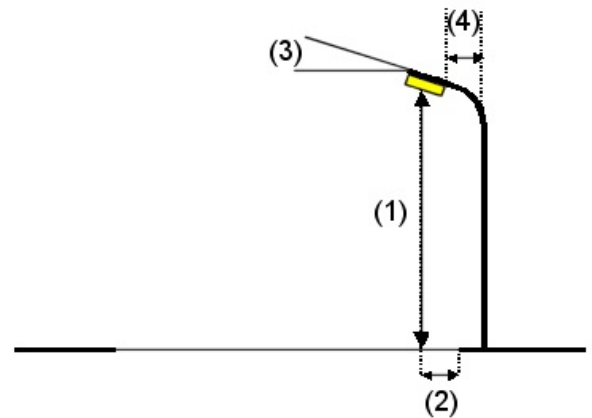
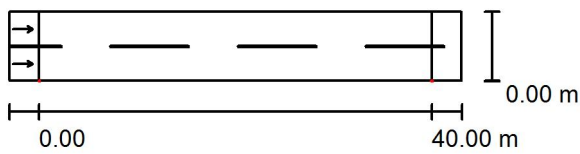
街道 1 / Planning data

Street Profile

道路 1 (Width: 7.000 m, Number of lanes: 2, tarmac: R3, q0: 0.070)

Maintenance factor: 0.80

Luminaire Arrangements



Luminaire:
 Luminous flux (Luminaire): 10127 lm
 Luminous flux (Lamps): 10190 lm
 Luminaire Wattage: 1.0 W
 Arrangement: Single row, bottom
 Pole Distance: 40.000 m
 Mounting Height (1): 10.000 m
 Height: 9.900 m
 Overhang (2): 0.000 m
 Boom Angle (3): 0.0 °
 Boom Length (4): 0.000 m

Maximum luminous intensities
 at 70°: 503 cd/klm
 at 80°: 290 cd/klm
 at 90°: 6.60 cd/klm

Any direction forming the specified angle from the downward vertical, with the luminaire installed for use.

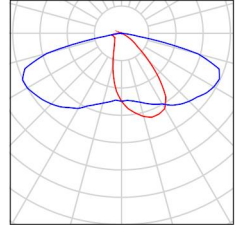
Arrangement complies with glare index class D.3.

Operator
Telephone
Fax
e-Mail

街道 1 / Luminaire parts list

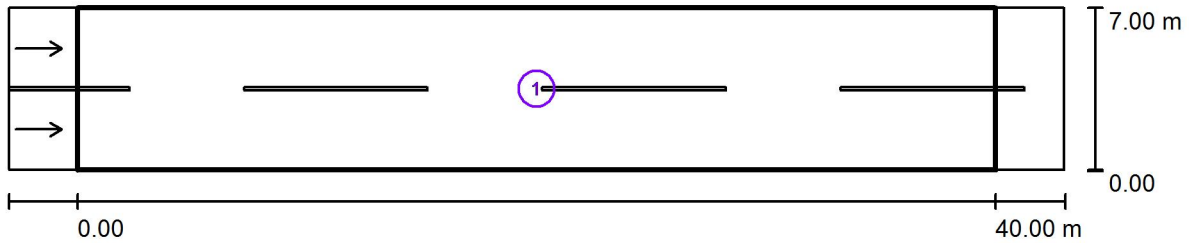
(Type 1)
Article No.:
Luminous flux (Luminaire): 10127 lm
Luminous flux (Lamps): 10190 lm
Luminaire Wattage: 1.0 W
Luminaire classification according to CIE: 99
CIE flux code: 37 70 94 99 99
Fitting: 1 x User defined (Correction Factor
1.000).

See our luminaire
catalog for an image of
the luminaire.



Operator
Telephone
Fax
e-Mail

街道 1 / Photometric Results



Maintenance factor: 0.80

Scale 1:329

Calculation Field List

- 1 评估区域 道路 1
Length: 40.000 m, Width: 7.000 m
Grid: 14 x 6 Points
Accompanying Street Elements: 道路 1.
tarmac: R3, q0: 0.070
Selected Lighting Class: ME4a

(All lighting performance requirements are met.)

	L_{av} [cd/m ²]	U0	UI	TI [%]	SR
Calculated values:	0.87	0.54	0.79	9	0.64
Required values according to class:	≥ 0.75	≥ 0.40	≥ 0.60	≤ 15	≥ 0.50
Fulfilled/Not fulfilled:	✓	✓	✓	✓	✓

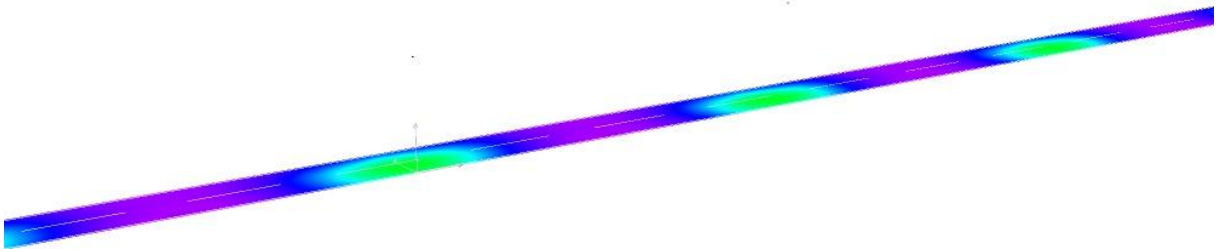
Operator
Telephone
Fax
e-Mail

街道 1 / 3D Rendering



Operator
Telephone
Fax
e-Mail

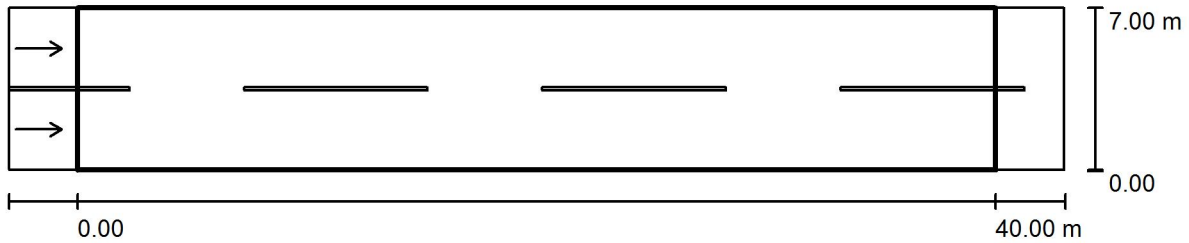
街道 1 / False Colour Rendering



0 6.25 12.50 18.75 25 31.25 37.50 43.75 50 lx

Operator
Telephone
Fax
e-Mail

街道 1 / 评估区域 道路 1 / Results overview



Maintenance factor: 0.80

Scale 1:329

Grid: 14 x 6 Points

Accompanying Street Elements: 道路 1.

tarmac: R3, q0: 0.070

Selected Lighting Class: ME4a

(All lighting performance requirements are met.)

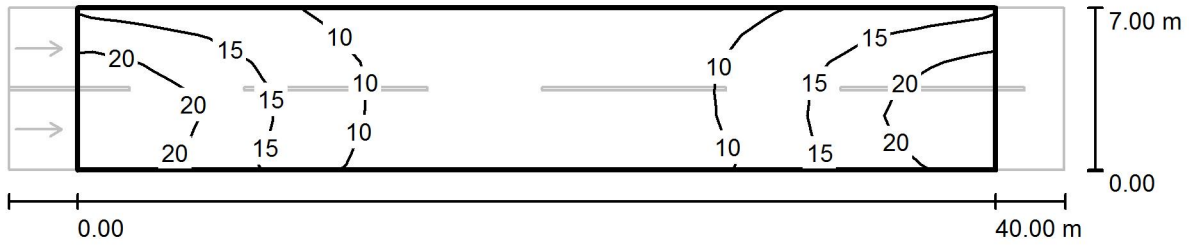
	L_{av} [cd/m ²]	U0	UI	TI [%]	SR
Calculated values:	0.87	0.54	0.79	9	0.64
Required values according to class:	≥ 0.75	≥ 0.40	≥ 0.60	≤ 15	≥ 0.50
Fulfilled/Not fulfilled:	✓	✓	✓	✓	✓

Assigned Observer (2 Pieces):

No.	Observer	Position [m]	L_{av} [cd/m ²]	U0	UI	TI [%]
1	观察器 1	(-60.000, 1.750, 1.500)	0.87	0.54	0.82	9
2	观察器 2	(-60.000, 5.250, 1.500)	0.95	0.56	0.79	8

Operator
 Telephone
 Fax
 e-Mail

街道 1 / 评估区域 道路 1 / Isolines (E)



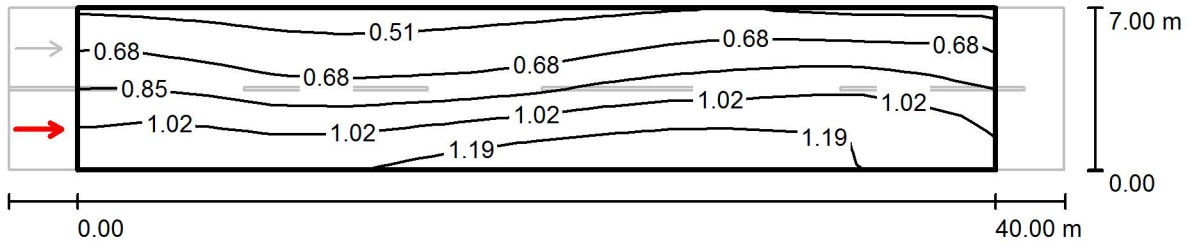
Values in Lux, Scale 1 : 329

Grid: 14 x 6 Points

E_{av} [lx]	E_{min} [lx]	E_{max} [lx]	u0	E_{min} / E_{max}
13	6.02	24	0.467	0.249

Operator
Telephone
Fax
e-Mail

街道 1 / 评估区域 道路 1 / 观察器 1 / Isolines (L)



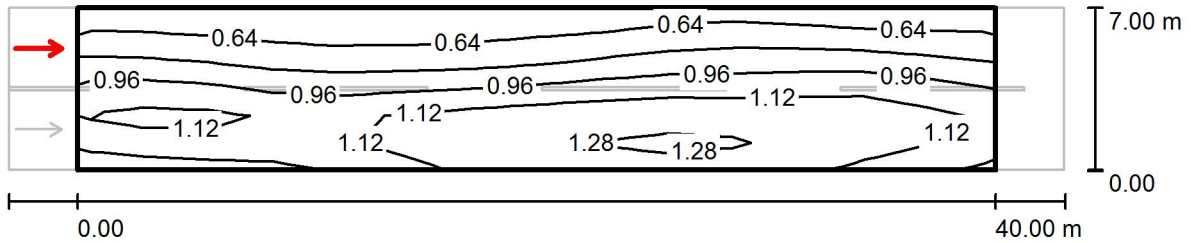
Values in Candela/m², Scale 1 : 329

Grid: 14 x 6 Points
Observer Position: (-60.000 m, 1.750 m, 1.500 m)
tarmac: R3, q0: 0.070

	L_{av} [cd/m ²]	U0	UI	TI [%]
Calculated values:	0.87	0.54	0.82	9
Required values according to class ME4a:	≥ 0.75	≥ 0.40	≥ 0.60	≤ 15
Fulfilled/Not fulfilled:	✓	✓	✓	✓

Operator
Telephone
Fax
e-Mail

街道 1 / 评估区域 道路 1 / 观察器 2 / Isolines (L)



Values in Candela/m², Scale 1 : 329

Grid: 14 x 6 Points
Observer Position: (-60.000 m, 5.250 m, 1.500 m)
tarmac: R3, q0: 0.070

	L_{av} [cd/m ²]	U0	UI	TI [%]
Calculated values:	0.95	0.56	0.79	8
Required values according to class ME4a:	≥ 0.75	≥ 0.40	≥ 0.60	≤ 15
Fulfilled/Not fulfilled:	✓	✓	✓	✓