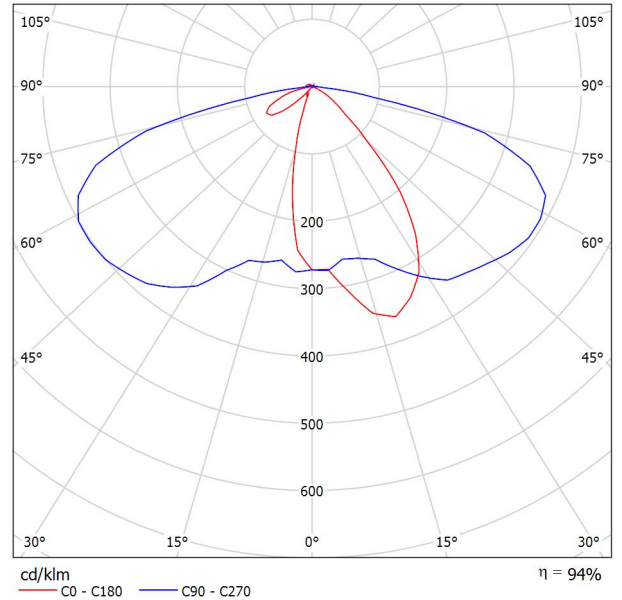


Operator  
 Telephone  
 Fax  
 e-Mail

**/ Luminaire Data Sheet**

See our luminaire catalog for an image of the luminaire.

Luminous emittance 1:



Luminaire classification according to CIE: 98  
 CIE flux code: 39 72 94 98 93

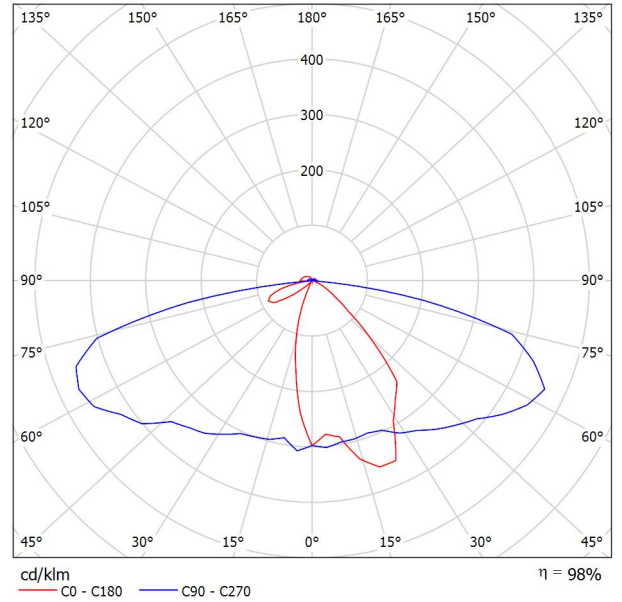
Due to missing symmetry properties, no UGR table can be displayed for this luminaire.

Operator  
 Telephone  
 Fax  
 e-Mail

**/ Luminaire Data Sheet**

See our luminaire catalog for an image of the luminaire.

Luminous emittance 1:



Luminaire classification according to CIE: 94  
 CIE flux code: 37 67 91 94 97

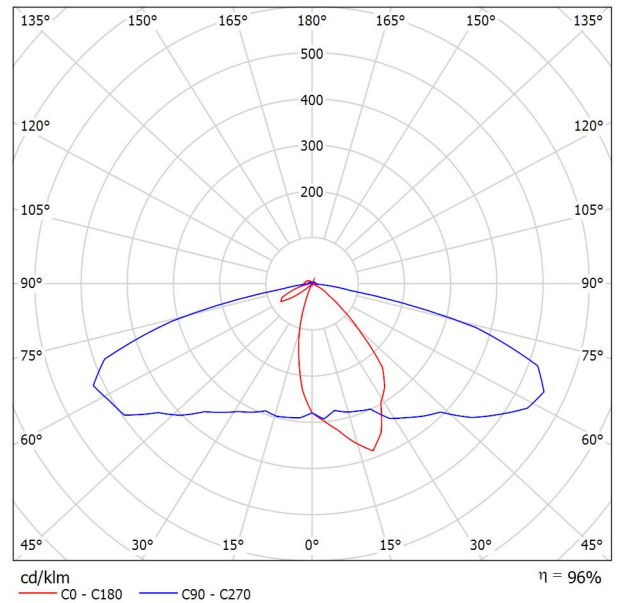
Due to missing symmetry properties, no UGR table can be displayed for this luminaire.

Operator  
 Telephone  
 Fax  
 e-Mail

**/ Luminaire Data Sheet**

See our luminaire catalog for an image of the luminaire.

Luminous emittance 1:



Luminaire classification according to CIE: 94  
 CIE flux code: 38 69 93 94 95

Due to missing symmetry properties, no UGR table can be displayed for this luminaire.

Operator  
Telephone  
Fax  
e-Mail

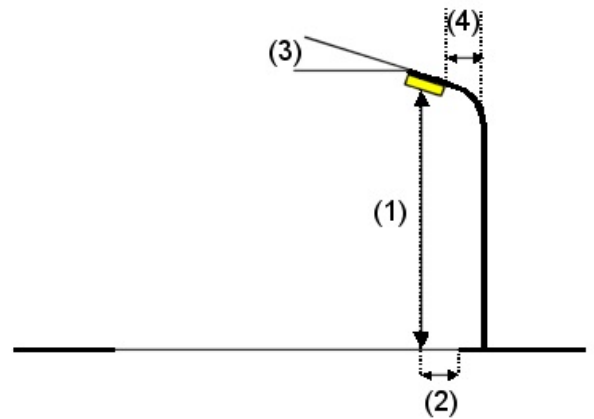
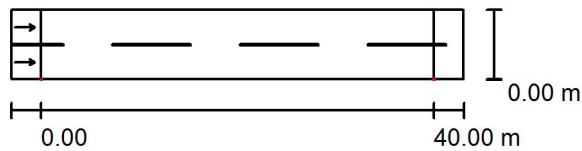
**XPG3 / Planning data**

**Street Profile**

道路 1 (Width: 7.000 m, Number of lanes: 2, tarmac: R3, q0: 0.070)

Maintenance factor: 0.80

**Luminaire Arrangements**



Luminaire:  
 Luminous flux (Luminaire): 9598 lm  
 Luminous flux (Lamps): 10000 lm  
 Luminaire Wattage: 1.0 W  
 Arrangement: Single row, bottom  
 Pole Distance: 40.000 m  
 Mounting Height (1): 10.000 m  
 Height: 9.950 m  
 Overhang (2): 0.000 m  
 Boom Angle (3): 0.0 °  
 Boom Length (4): 0.000 m

**Maximum luminous intensities**

at 70°: 676 cd/klm  
 at 80°: 470 cd/klm  
 at 90°: 22 cd/klm

Any direction forming the specified angle from the downward vertical, with the luminaire installed for use.

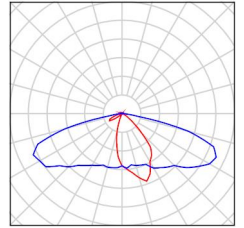
Arrangement complies with glare index class D.0.

Operator  
Telephone  
Fax  
e-Mail

## XPG3 / Luminaire parts list

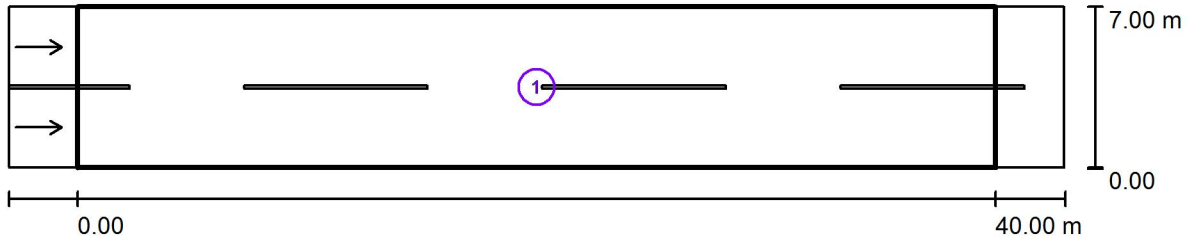
(Type 1)  
Article No.:  
Luminous flux (Luminaire): 9598 lm  
Luminous flux (Lamps): 10000 lm  
Luminaire Wattage: 1.0 W  
Luminaire classification according to CIE: 94  
CIE flux code: 38 69 93 94 95  
Fitting: 1 x User defined (Correction Factor  
1.000).

See our luminaire  
catalog for an image of  
the luminaire.



Operator  
Telephone  
Fax  
e-Mail

**XPG3 / Photometric Results**



Maintenance factor: 0.80

Scale 1:329

**Calculation Field List**

- 1 评估区域 道路 1  
Length: 40.000 m, Width: 7.000 m  
Grid: 14 x 6 Points  
Accompanying Street Elements: 道路 1.  
tarmac: R3, q0: 0.070  
Selected Lighting Class: ME4a

(All lighting performance requirements are met.)

	$L_{av}$ [cd/m <sup>2</sup> ]	U0	UI	TI [%]	SR
Calculated values:	0.98	0.51	0.81	11	0.60
Required values according to class:	$\geq 0.75$	$\geq 0.40$	$\geq 0.60$	$\leq 15$	$\geq 0.50$
Fulfilled/Not fulfilled:	✓	✓	✓	✓	✓

Operator  
Telephone  
Fax  
e-Mail

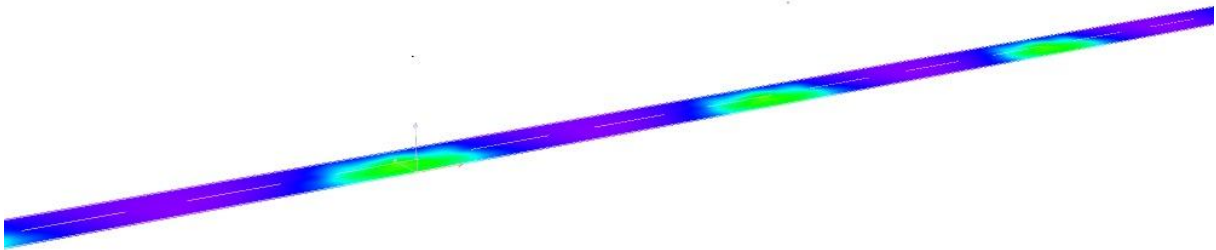
---

**XPG3 / 3D Rendering**



Operator  
Telephone  
Fax  
e-Mail

**XPG3 / False Colour Rendering**



0      6.25      12.50      18.75      25      31.25      37.50      43.75      50      lx



Operator  
Telephone  
Fax  
e-Mail

XPG3 / 评估区域 道路 1 / Results overview



Maintenance factor: 0.80

Scale 1:329

Grid: 14 x 6 Points

Accompanying Street Elements: 道路 1.

tarmac: R3, q0: 0.070

Selected Lighting Class: ME4a

(All lighting performance requirements are met.)

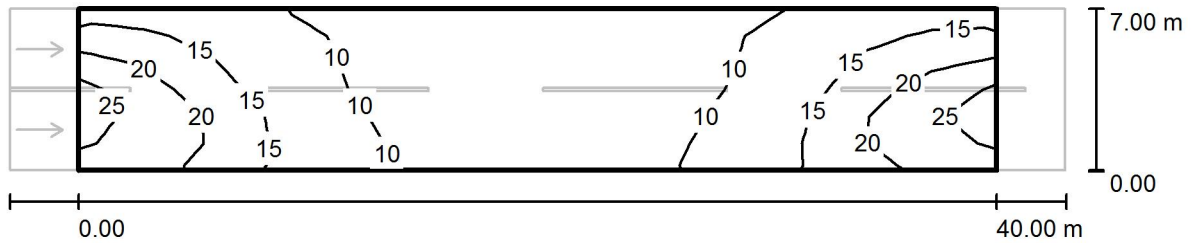
	$L_{av}$ [cd/m <sup>2</sup> ]	U0	UI	TI [%]	SR
Calculated values:	0.98	0.51	0.81	11	0.60
Required values according to class:	≥ 0.75	≥ 0.40	≥ 0.60	≤ 15	≥ 0.50
Fulfilled/Not fulfilled:	✓	✓	✓	✓	✓

Assigned Observer (2 Pieces):

No.	Observer	Position [m]	$L_{av}$ [cd/m <sup>2</sup> ]	U0	UI	TI [%]
1	观察器 1	(-60.000, 1.750, 1.500)	0.98	0.51	0.82	11
2	观察器 2	(-60.000, 5.250, 1.500)	1.07	0.53	0.81	9

Operator  
Telephone  
Fax  
e-Mail

XPG3 / 评估区域 道路 1 / Isolines (E)



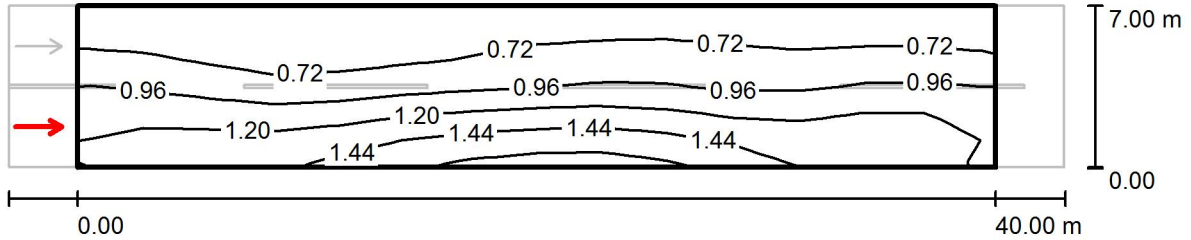
Values in Lux, Scale 1 : 329

Grid: 14 x 6 Points

$E_{av}$ [lx]	$E_{min}$ [lx]	$E_{max}$ [lx]	u0	$E_{min} / E_{max}$
13	7.45	26	0.563	0.289

Operator  
Telephone  
Fax  
e-Mail

XPG3 / 评估区域 道路 1 / 观察器 1 / Isolines (L)



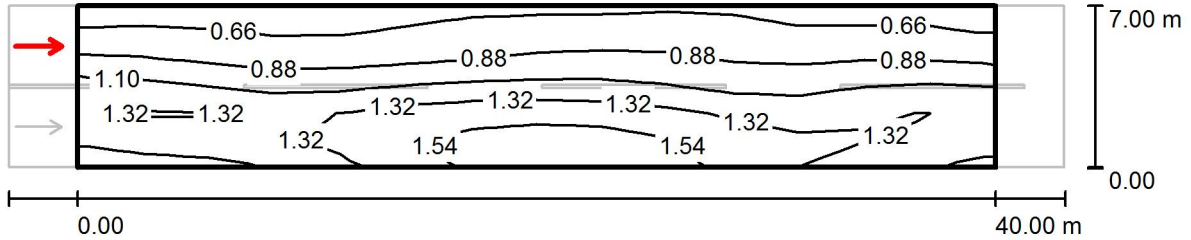
Values in Candela/m<sup>2</sup>, Scale 1 : 329

Grid: 14 x 6 Points  
Observer Position: (-60.000 m, 1.750 m, 1.500 m)  
tarmac: R3, q0: 0.070

	$L_{av}$ [cd/m <sup>2</sup> ]	U0	UI	TI [%]
Calculated values:	0.98	0.51	0.82	11
Required values according to class ME4a:	≥ 0.75	≥ 0.40	≥ 0.60	≤ 15
Fulfilled/Not fulfilled:	✓	✓	✓	✓

Operator  
Telephone  
Fax  
e-Mail

XPG3 / 评估区域 道路 1 / 观察器 2 / Isolines (L)



Values in Candela/m<sup>2</sup>, Scale 1 : 329

Grid: 14 x 6 Points  
Observer Position: (-60.000 m, 5.250 m, 1.500 m)  
tarmac: R3, q0: 0.070

	$L_{av}$ [cd/m <sup>2</sup> ]	U0	UI	TI [%]
Calculated values:	1.07	0.53	0.81	9
Required values according to class ME4a:	≥ 0.75	≥ 0.40	≥ 0.60	≤ 15
Fulfilled/Not fulfilled:	✓	✓	✓	✓

Operator  
Telephone  
Fax  
e-Mail

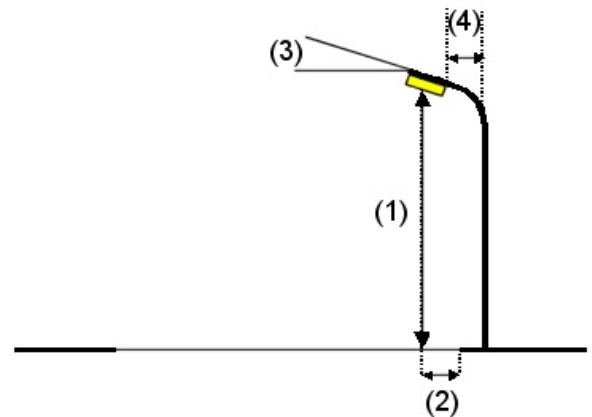
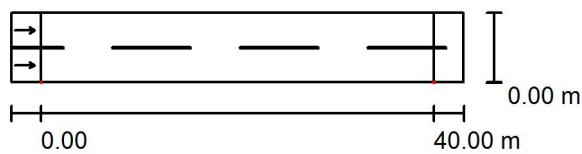
**NVSW219C / Planning data**

**Street Profile**

Roadway 1 (Width: 7.000 m, Number of lanes: 2, tarmac: R3, q0: 0.070)

Maintenance factor: 0.67

**Luminaire Arrangements**



Luminaire:  
 Luminous flux (Luminaire): 9752 lm  
 Luminous flux (Lamps): 10000 lm  
 Luminaire Wattage: 1.0 W  
 Arrangement: Single row, bottom  
 Pole Distance: 40.000 m  
 Mounting Height (1): 10.000 m  
 Height: 9.950 m  
 Overhang (2): 0.000 m  
 Boom Angle (3): 0.0 °  
 Boom Length (4): 0.000 m

**Maximum luminous intensities**

at 70°: 583 cd/klm  
 at 80°: 564 cd/klm  
 at 90°: 26 cd/klm

Any direction forming the specified angle from the downward vertical, with the luminaire installed for use.

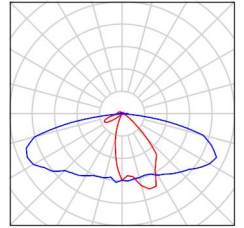
Arrangement complies with glare index class D.0.

Operator  
 Telephone  
 Fax  
 e-Mail

**NVSW219C / Luminaire parts list**

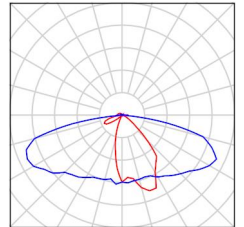
(Type 1)  
 Article No.:  
 Luminous flux (Luminaire): 9752 lm  
 Luminous flux (Lamps): 10000 lm  
 Luminaire Wattage: 1.0 W  
 Luminaire classification according to CIE: 94  
 CIE flux code: 37 67 91 94 97  
 Fitting: 1 x User defined (Correction Factor 1.000).

See our luminaire catalog for an image of the luminaire.



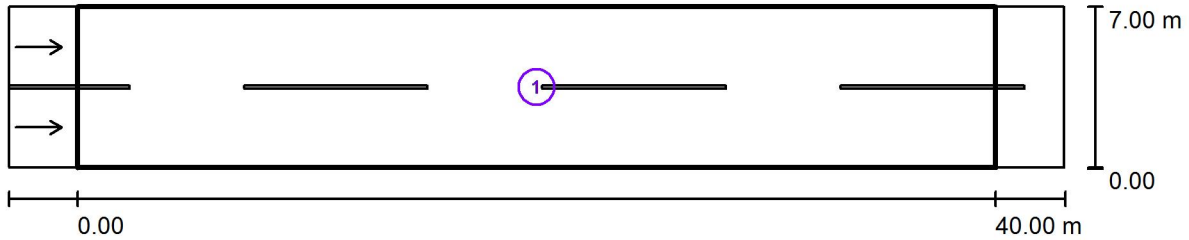
Article No.:  
 Luminous flux (Luminaire): 172 lm  
 Luminous flux (Lamps): 176 lm  
 Luminaire Wattage: 1.0 W  
 Luminaire classification according to CIE: 94  
 CIE flux code: 37 67 91 94 97  
 Fitting: 1 x User defined (Correction Factor 1.000).

See our luminaire catalog for an image of the luminaire.



Operator  
Telephone  
Fax  
e-Mail

**NVSW219C / Photometric Results**



Maintenance factor: 0.67

Scale 1:329

**Calculation Field List**

- 1 Valuation Field Roadway 1  
Length: 40.000 m, Width: 7.000 m  
Grid: 14 x 6 Points  
Accompanying Street Elements: Roadway 1.  
tarmac: R3, q0: 0.070  
Selected Lighting Class: ME4a

(All lighting performance requirements are met.)

	$L_{av}$ [cd/m <sup>2</sup> ]	U0	UI	TI [%]	SR
Calculated values:	0.78	0.48	0.79	11	0.63
Required values according to class:	≥ 0.75	≥ 0.40	≥ 0.60	≤ 15	≥ 0.50
Fulfilled/Not fulfilled:	✓	✓	✓	✓	✓

Operator  
Telephone  
Fax  
e-Mail

**NVSW219C / 3D Rendering**

---





Operator  
Telephone  
Fax  
e-Mail

## NVSW219C / False Colour Rendering



0      6.25      12.50      18.75      25      31.25      37.50      43.75      50      lx

Operator  
Telephone  
Fax  
e-Mail

**NVSW219C / Valuation Field Roadway 1 / Results overview**



Maintenance factor: 0.67

Scale 1:329

Grid: 14 x 6 Points

Accompanying Street Elements: Roadway 1.

tarmac: R3, q0: 0.070

Selected Lighting Class: ME4a

(All lighting performance requirements are met.)

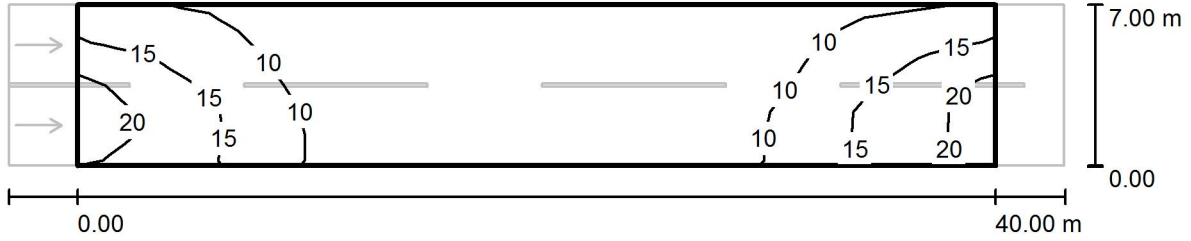
	$L_{av}$ [cd/m <sup>2</sup> ]	U0	UI	TI [%]	SR
Calculated values:	0.78	0.48	0.79	11	0.63
Required values according to class:	≥ 0.75	≥ 0.40	≥ 0.60	≤ 15	≥ 0.50
Fulfilled/Not fulfilled:	✓	✓	✓	✓	✓

**Assigned Observer (2 Pieces):**

No.	Observer	Position [m]	$L_{av}$ [cd/m <sup>2</sup> ]	U0	UI	TI [%]
1	Observer 1	(-60.000, 1.750, 1.500)	0.78	0.48	0.79	11
2	Observer 2	(-60.000, 5.250, 1.500)	0.87	0.50	0.79	10

Operator  
 Telephone  
 Fax  
 e-Mail

**NVSW219C / Valuation Field Roadway 1 / Isolines (E)**



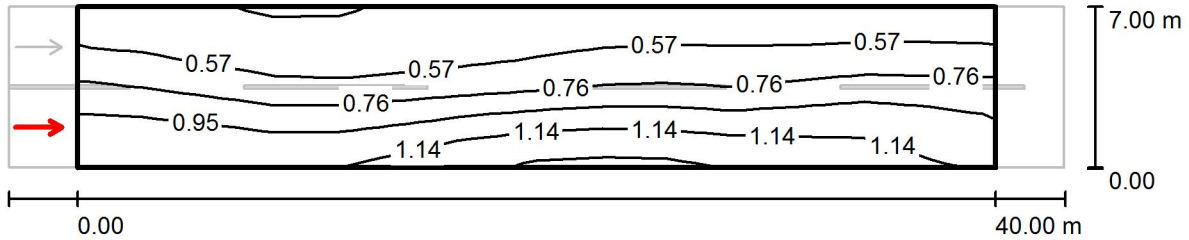
Values in Lux, Scale 1 : 329

Grid: 14 x 6 Points

$E_{av}$ [lx]	$E_{min}$ [lx]	$E_{max}$ [lx]	u0	$E_{min} / E_{max}$
10	5.46	21	0.526	0.257

Operator  
Telephone  
Fax  
e-Mail

**NVSW219C / Valuation Field Roadway 1 / Observer 1 / Isolines (L)**



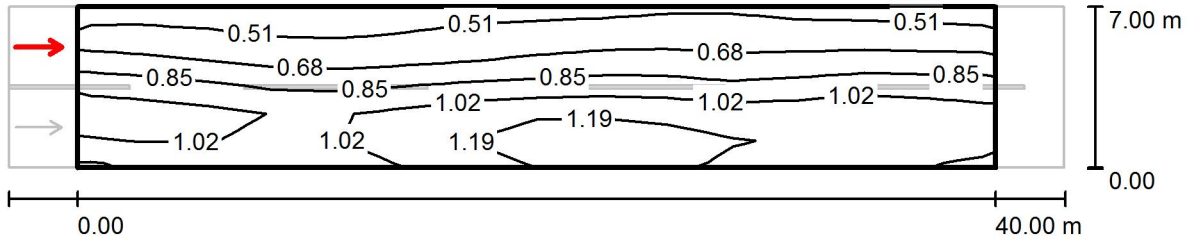
Values in Candela/m², Scale 1 : 329

Grid: 14 x 6 Points  
Observer Position: (-60.000 m, 1.750 m, 1.500 m)  
tarmac: R3, q0: 0.070

	$L_{av}$ [cd/m²]	U0	UI	TI [%]
Calculated values:	0.78	0.48	0.79	11
Required values according to class ME4a:	$\geq 0.75$	$\geq 0.40$	$\geq 0.60$	$\leq 15$
Fulfilled/Not fulfilled:	✓	✓	✓	✓

Operator  
Telephone  
Fax  
e-Mail

**NVSW219C / Valuation Field Roadway 1 / Observer 2 / Isolines (L)**



Values in Candela/m², Scale 1 : 329

Grid: 14 x 6 Points  
Observer Position: (-60.000 m, 5.250 m, 1.500 m)  
tarmac: R3, q0: 0.070

	$L_{av}$ [cd/m²]	U0	UI	TI [%]
Calculated values:	0.87	0.50	0.79	10
Required values according to class ME4a:	$\geq 0.75$	$\geq 0.40$	$\geq 0.60$	$\leq 15$
Fulfilled/Not fulfilled:	✓	✓	✓	✓

Operator  
Telephone  
Fax  
e-Mail

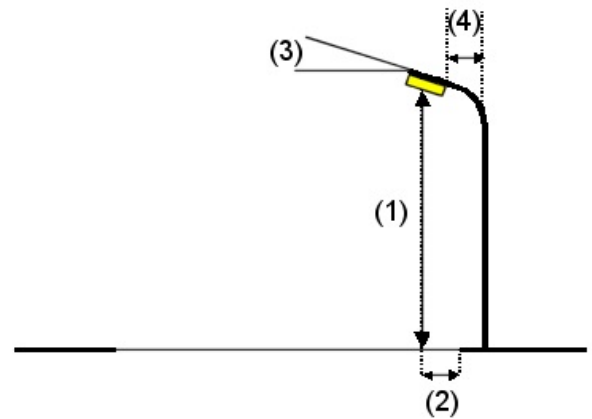
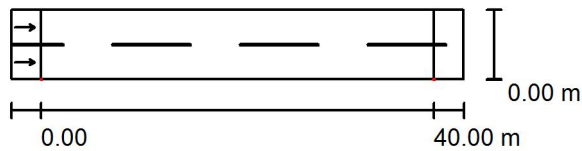
**Seoul5050 / Planning data**

**Street Profile**

Roadway 1 (Width: 7.000 m, Number of lanes: 2, tarmac: R3, q0: 0.070)

Maintenance factor: 0.67

**Luminaire Arrangements**



Luminaire:  
 Luminous flux (Luminaire): 9367 lm  
 Luminous flux (Lamps): 10000 lm  
 Luminaire Wattage: 1.0 W  
 Arrangement: Single row, bottom  
 Pole Distance: 40.000 m  
 Mounting Height (1): 10.000 m  
 Height: 9.950 m  
 Overhang (2): 0.000 m  
 Boom Angle (3): 0.0 °  
 Boom Length (4): 0.000 m

**Maximum luminous intensities**

at 70°: 559 cd/klm  
 at 80°: 368 cd/klm  
 at 90°: 13 cd/klm

Any direction forming the specified angle from the downward vertical, with the luminaire installed for use.

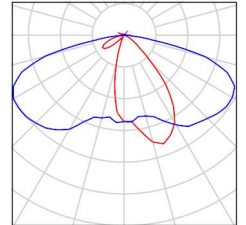
Arrangement complies with glare index class D.0.

Operator  
 Telephone  
 Fax  
 e-Mail

**Seoul5050 / Luminaire parts list**

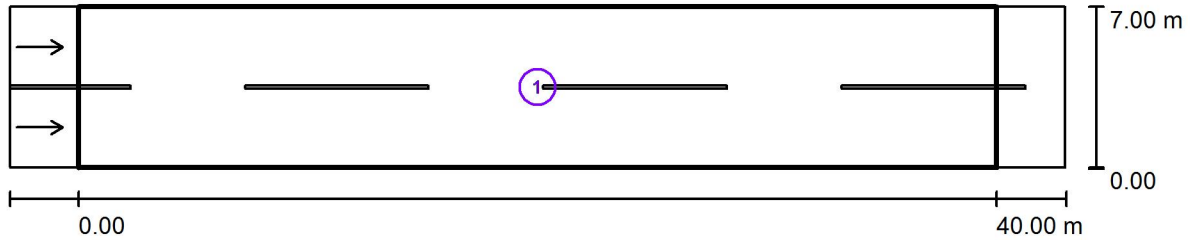
(Type 1)  
 Article No.:  
 Luminous flux (Luminaire): 9367 lm  
 Luminous flux (Lamps): 10000 lm  
 Luminaire Wattage: 1.0 W  
 Luminaire classification according to CIE: 98  
 CIE flux code: 39 72 94 98 93  
 Fitting: 1 x User defined (Correction Factor 1.000).

See our luminaire catalog for an image of the luminaire.



Operator  
Telephone  
Fax  
e-Mail

**Seoul5050 / Photometric Results**



Maintenance factor: 0.67

Scale 1:329

**Calculation Field List**

- 1 Valuation Field Roadway 1  
Length: 40.000 m, Width: 7.000 m  
Grid: 14 x 6 Points  
Accompanying Street Elements: Roadway 1.  
tarmac: R3, q0: 0.070  
Selected Lighting Class: ME4a

(All lighting performance requirements are met.)

	$L_{av}$ [cd/m <sup>2</sup> ]	U0	UI	TI [%]	SR
Calculated values:	0.77	0.53	0.79	10	0.57
Required values according to class:	≥ 0.75	≥ 0.40	≥ 0.60	≤ 15	≥ 0.50
Fulfilled/Not fulfilled:	✓	✓	✓	✓	✓



Operator  
Telephone  
Fax  
e-Mail

---

**Seoul5050 / 3D Rendering**



Operator  
Telephone  
Fax  
e-Mail

## Seoul5050 / False Colour Rendering



0      6.25      12.50      18.75      25      31.25      37.50      43.75      50      lx

Operator  
Telephone  
Fax  
e-Mail

**Seoul5050 / Valuation Field Roadway 1 / Results overview**



Maintenance factor: 0.67

Scale 1:329

Grid: 14 x 6 Points

Accompanying Street Elements: Roadway 1.

tarmac: R3, q0: 0.070

Selected Lighting Class: ME4a

(All lighting performance requirements are met.)

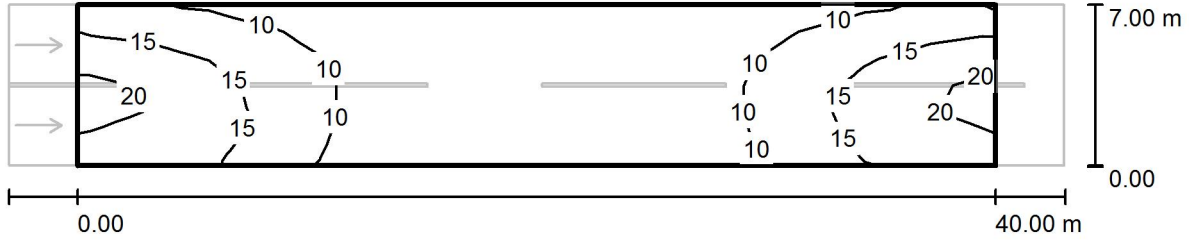
	$L_{av}$ [cd/m <sup>2</sup> ]	U0	UI	TI [%]	SR
Calculated values:	0.77	0.53	0.79	10	0.57
Required values according to class:	≥ 0.75	≥ 0.40	≥ 0.60	≤ 15	≥ 0.50
Fulfilled/Not fulfilled:	✓	✓	✓	✓	✓

**Assigned Observer (2 Pieces):**

No.	Observer	Position [m]	$L_{av}$ [cd/m <sup>2</sup> ]	U0	UI	TI [%]
1	Observer 1	(-60.000, 1.750, 1.500)	0.77	0.53	0.79	10
2	Observer 2	(-60.000, 5.250, 1.500)	0.84	0.55	0.79	9

Operator  
 Telephone  
 Fax  
 e-Mail

**Seoul5050 / Valuation Field Roadway 1 / Isolines (E)**



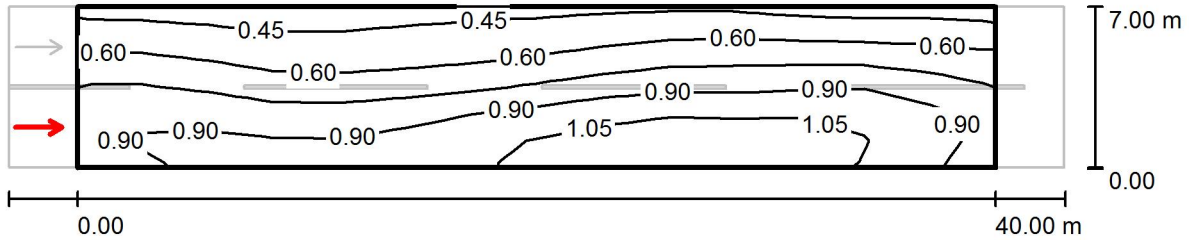
Values in Lux, Scale 1 : 329

Grid: 14 x 6 Points

$E_{av}$ [lx]	$E_{min}$ [lx]	$E_{max}$ [lx]	u0	$E_{min} / E_{max}$
11	5.00	21	0.447	0.234

Operator  
Telephone  
Fax  
e-Mail

**Seoul5050 / Valuation Field Roadway 1 / Observer 1 / Isolines (L)**



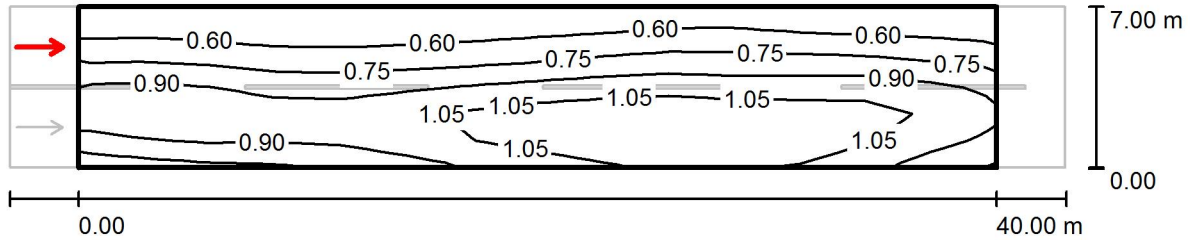
Values in Candela/m<sup>2</sup>, Scale 1 : 329

Grid: 14 x 6 Points  
Observer Position: (-60.000 m, 1.750 m, 1.500 m)  
tarmac: R3, q0: 0.070

	$L_{av}$ [cd/m <sup>2</sup> ]	U0	UI	TI [%]
Calculated values:	0.77	0.53	0.79	10
Required values according to class ME4a:	≥ 0.75	≥ 0.40	≥ 0.60	≤ 15
Fulfilled/Not fulfilled:	✓	✓	✓	✓

Operator  
 Telephone  
 Fax  
 e-Mail

**Seoul5050 / Valuation Field Roadway 1 / Observer 2 / Isolines (L)**



Values in Candela/m<sup>2</sup>, Scale 1 : 329

Grid: 14 x 6 Points  
 Observer Position: (-60.000 m, 5.250 m, 1.500 m)  
 tarmac: R3, q0: 0.070

	$L_{av}$ [cd/m <sup>2</sup> ]	U0	UI	TI [%]
Calculated values:	0.84	0.55	0.79	9
Required values according to class ME4a:	≥ 0.75	≥ 0.40	≥ 0.60	≤ 15
Fulfilled/Not fulfilled:	✓	✓	✓	✓