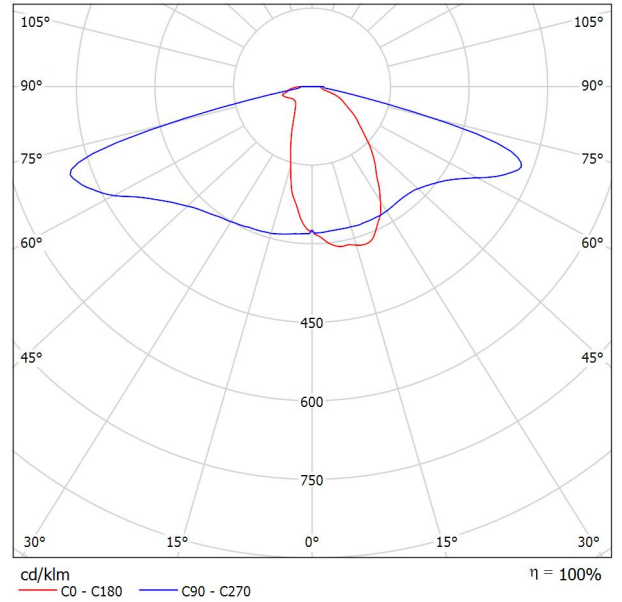


Operator
 Telephone
 Fax
 e-Mail

/ Luminaire Data Sheet

See our luminaire catalog for an image of the luminaire.

Luminous emittance 1:



Luminaire classification according to CIE: 100
 CIE flux code: 36 66 92 100 100

Due to missing symmetry properties, no UGR table can be displayed for this luminaire.

Operator
Telephone
Fax
e-Mail

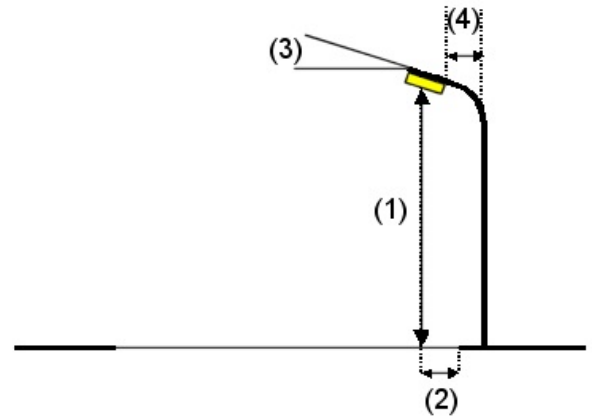
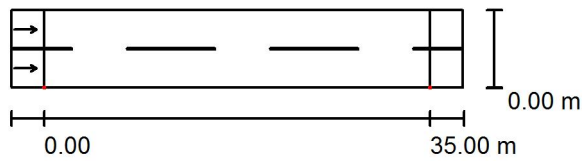
街道 1 / Planning data

Street Profile

道路 1 (Width: 7.000 m, Number of lanes: 2, tarmac: R3, q0: 0.070)

Maintenance factor: 0.80

Luminaire Arrangements



Luminaire:	
Luminous flux (Luminaire):	13987 lm
Luminous flux (Lamps):	14000 lm
Luminaire Wattage:	0.0 W
Arrangement:	Single row, bottom
Pole Distance:	35.000 m
Mounting Height (1):	10.000 m
Height:	9.900 m
Overhang (2):	0.000 m
Boom Angle (3):	0.0 °
Boom Length (4):	0.000 m

Maximum luminous intensities	
at 70°:	628 cd/klm
at 80°:	131 cd/klm
at 90°:	25 cd/klm

Any direction forming the specified angle from the downward vertical, with the luminaire installed for use.

No luminous intensities above 90°.

Arrangement complies with luminous intensity class G2.

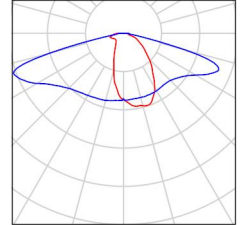
Arrangement complies with glare index class D.2.

Operator
Telephone
Fax
e-Mail

街道 1 / Luminaire parts list

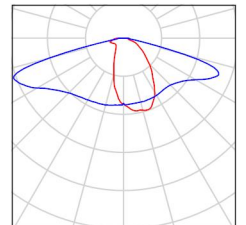
(Type 1)
Article No.:
Luminous flux (Luminaire): 13987 lm
Luminous flux (Lamps): 14000 lm
Luminaire Wattage: 0.0 W
Luminaire classification according to CIE: 100
CIE flux code: 36 66 92 100 100
Fitting: 1 x User defined (Correction Factor 1.000).

See our luminaire catalog for an image of the luminaire.



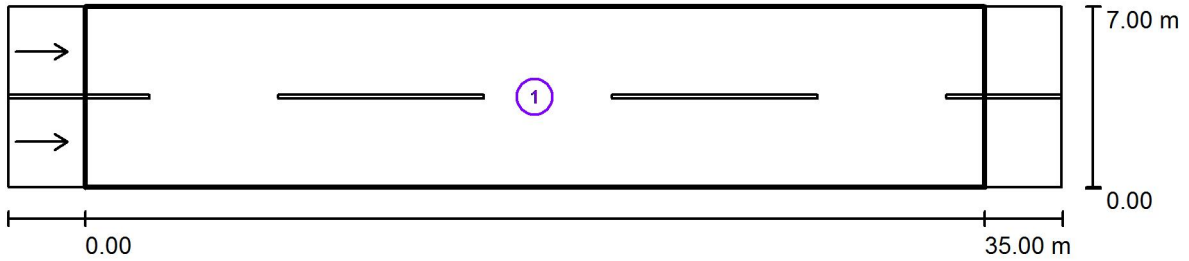
Article No.:
Luminous flux (Luminaire): 39 lm
Luminous flux (Lamps): 39 lm
Luminaire Wattage: 0.0 W
Luminaire classification according to CIE: 100
CIE flux code: 36 66 92 100 100
Fitting: 1 x User defined (Correction Factor 1.000).

See our luminaire catalog for an image of the luminaire.



Operator
Telephone
Fax
e-Mail

街道 1 / Photometric Results



Maintenance factor: 0.80

Scale 1:294

Calculation Field List

- 1 评估区域 道路 1
Length: 35.000 m, Width: 7.000 m
Grid: 12 x 6 Points
Accompanying Street Elements: 道路 1.
tarmac: R3, q0: 0.070
Selected Lighting Class: ME4a

(All lighting performance requirements are met.)

	L_{av} [cd/m ²]	U0	UI	TI [%]	SR
Calculated values:	1.31	0.53	0.82	13	0.63
Required values according to class:	≥ 0.75	≥ 0.40	≥ 0.60	≤ 15	≥ 0.50
Fulfilled/Not fulfilled:	✓	✓	✓	✓	✓

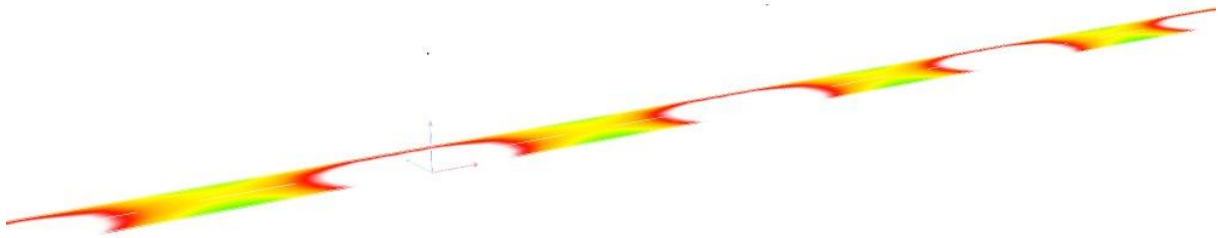
Operator
Telephone
Fax
e-Mail

街道 1 / 3D Rendering



Operator
Telephone
Fax
e-Mail

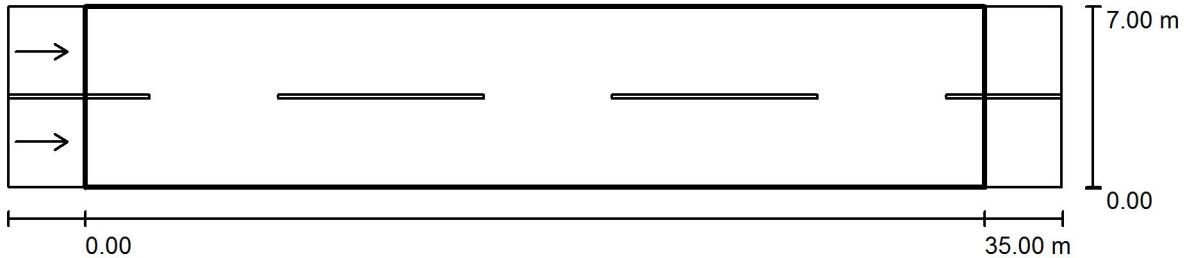
街道 1 / False Colour Rendering



0 2.50 5 7.50 10 12.50 15 17.50 20 lx

Operator
Telephone
Fax
e-Mail

街道 1 / 评估区域 道路 1 / Results overview



Maintenance factor: 0.80

Scale 1:294

Grid: 12 x 6 Points

Accompanying Street Elements: 道路 1.

tarmac: R3, q0: 0.070

Selected Lighting Class: ME4a

(All lighting performance requirements are met.)

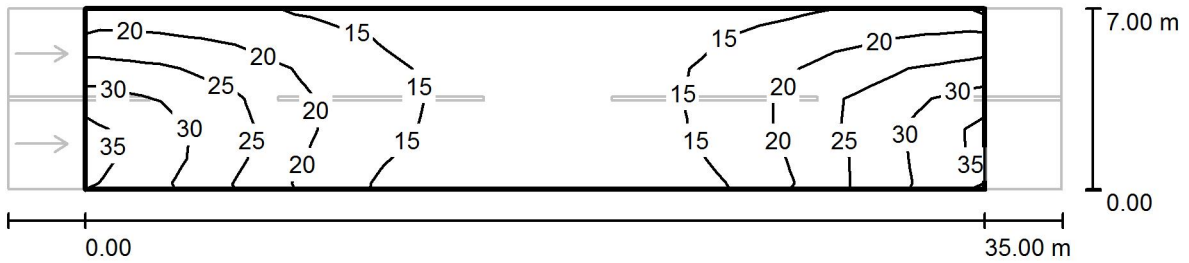
	L_{av} [cd/m ²]	U0	UI	TI [%]	SR
Calculated values:	1.31	0.53	0.82	13	0.63
Required values according to class:	≥ 0.75	≥ 0.40	≥ 0.60	≤ 15	≥ 0.50
Fulfilled/Not fulfilled:	✓	✓	✓	✓	✓

Assigned Observer (2 Pieces):

No.	Observer	Position [m]	L_{av} [cd/m ²]	U0	UI	TI [%]
1	观察器 1	(-60.000, 1.750, 1.500)	1.31	0.54	0.82	13
2	观察器 2	(-60.000, 5.250, 1.500)	1.43	0.53	0.89	10

Operator
 Telephone
 Fax
 e-Mail

街道 1 / 评估区域 道路 1 / Isolines (E)



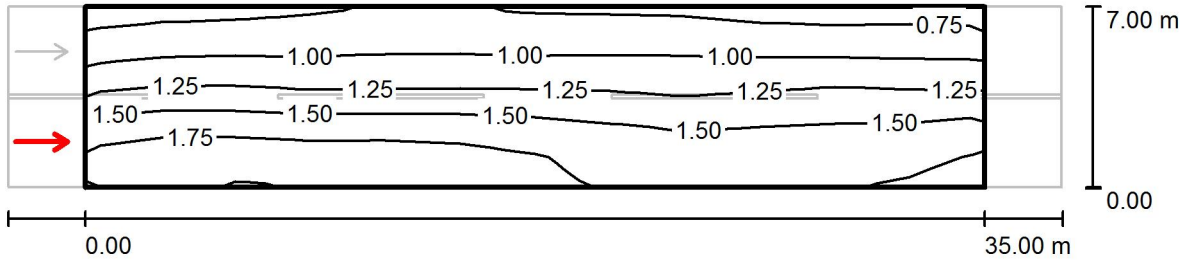
Values in Lux, Scale 1 : 294

Grid: 12 x 6 Points

E_{av} [lx]	E_{min} [lx]	E_{max} [lx]	u0	E_{min} / E_{max}
19	11	35	0.570	0.314

Operator
Telephone
Fax
e-Mail

街道 1 / 评估区域 道路 1 / 观察器 1 / Isolines (L)



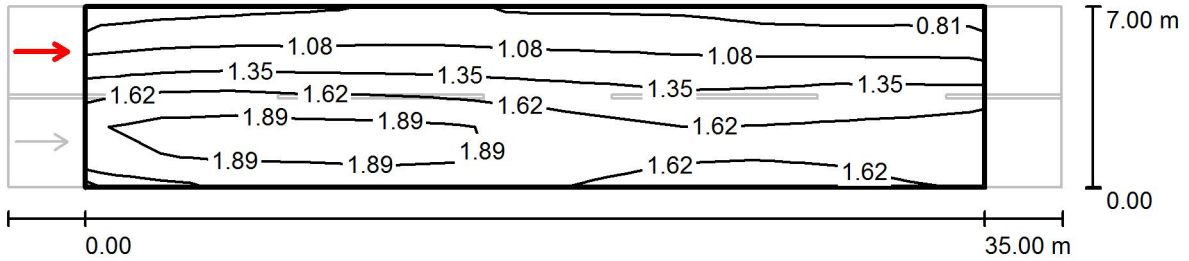
Values in Candela/m², Scale 1 : 294

Grid: 12 x 6 Points
Observer Position: (-60.000 m, 1.750 m, 1.500 m)
tarmac: R3, q0: 0.070

	L_{av} [cd/m²]	U0	UI	TI [%]
Calculated values:	1.31	0.54	0.82	13
Required values according to class ME4a:	≥ 0.75	≥ 0.40	≥ 0.60	≤ 15
Fulfilled/Not fulfilled:	✓	✓	✓	✓

Operator
Telephone
Fax
e-Mail

街道 1 / 评估区域 道路 1 / 观察器 2 / Isolines (L)



Values in Candela/m², Scale 1 : 294

Grid: 12 x 6 Points
Observer Position: (-60.000 m, 5.250 m, 1.500 m)
tarmac: R3, q0: 0.070

	L_{av} [cd/m ²]	U0	UI	TI [%]
Calculated values:	1.43	0.53	0.89	10
Required values according to class ME4a:	≥ 0.75	≥ 0.40	≥ 0.60	≤ 15
Fulfilled/Not fulfilled:	✓	✓	✓	✓