

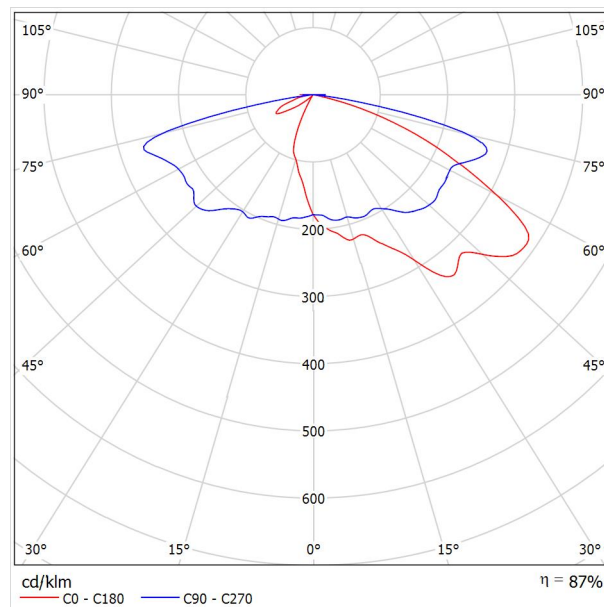


Operator
 Telephone
 Fax
 e-Mail

/ Luminaire Data Sheet

Luminous emittance 1:

See our luminaire catalog for an image of the luminaire.



Luminaire classification according to CIE: 100
 CIE flux code: 31 66 95 100 88

Due to missing symmetry properties, no UGR table can be displayed for this luminaire.



Operator
Telephone
Fax
e-Mail

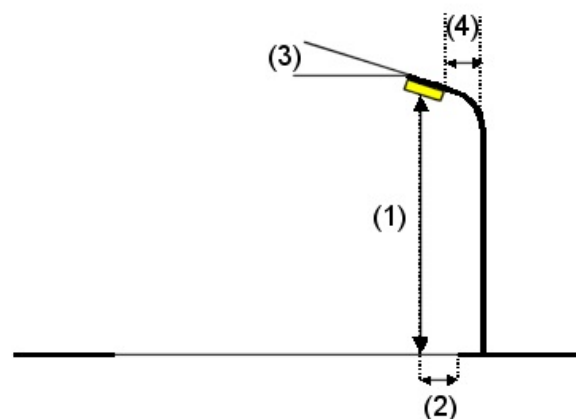
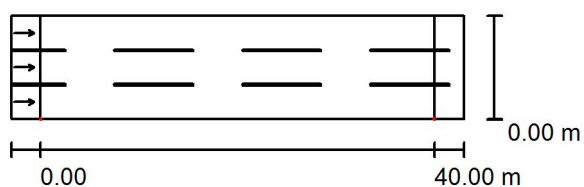
街道 1 / Planning data

Street Profile

道路 1 (Width: 10.500 m, Number of lanes: 3, tarmac: R3, q0: 0.070)

Light loss factor: 0.80

Luminaire Arrangements



Luminaire:	
Luminous flux (Luminaire):	13122 lm
Luminous flux (Lamps):	15000 lm
Luminaire Wattage:	1.0 W
Arrangement:	Single row, bottom
Pole Distance:	40.000 m
Mounting Height (1):	10.000 m
Height:	9.900 m
Overhang (2):	0.000 m
Boom Angle (3):	0.0 °
Boom Length (4):	0.000 m

Maximum luminous intensities

at 70°:	450 cd/klm
at 80°:	121 cd/klm
at 90°:	22 cd/klm

Any direction forming the specified angle from the downward vertical, with the luminaire installed for use.

No luminous intensities above 90°.

Arrangement complies with luminous intensity class G2.

Arrangement complies with glare index class D.3.

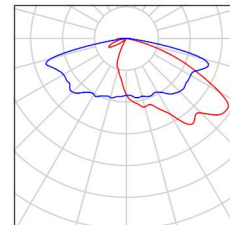


Operator
Telephone
Fax
e-Mail

街道 1 / Luminaire parts list

(Type 1)
Article No.:
Luminous flux (Luminaire): 13122 lm
Luminous flux (Lamps): 15000 lm
Luminaire Wattage: 1.0 W
Luminaire classification according to CIE: 100
CIE flux code: 31 66 95 100 88
Fitting: 1 x User defined (Correction Factor 1.000).

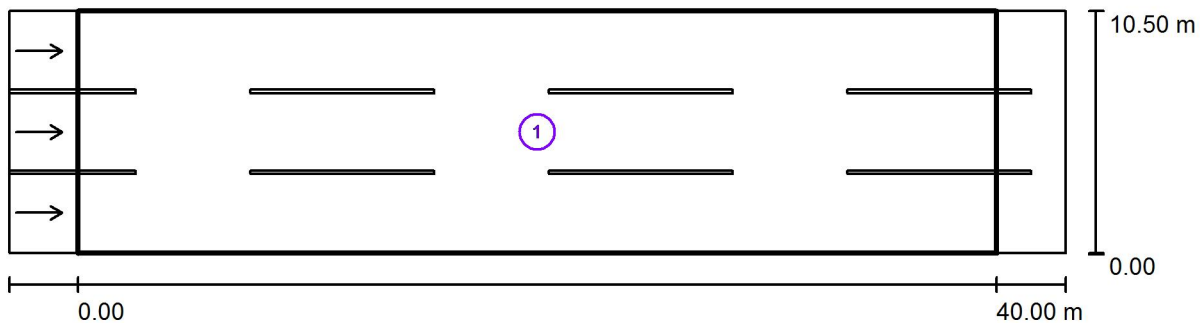
See our luminaire catalog for an image of the luminaire.





Operator
Telephone
Fax
e-Mail

街道 1 / Photometric Results



Light loss factor: 0.80

Scale 1:329

Calculation Field List

- 1 评估区域 道路 1
 Length: 40.000 m, Width: 10.500 m
 Grid: 14 x 9 Points
 Accompanying Street Elements: 道路 1.
 tarmac: R3, q0: 0.070
 Selected Lighting Class: ME4a

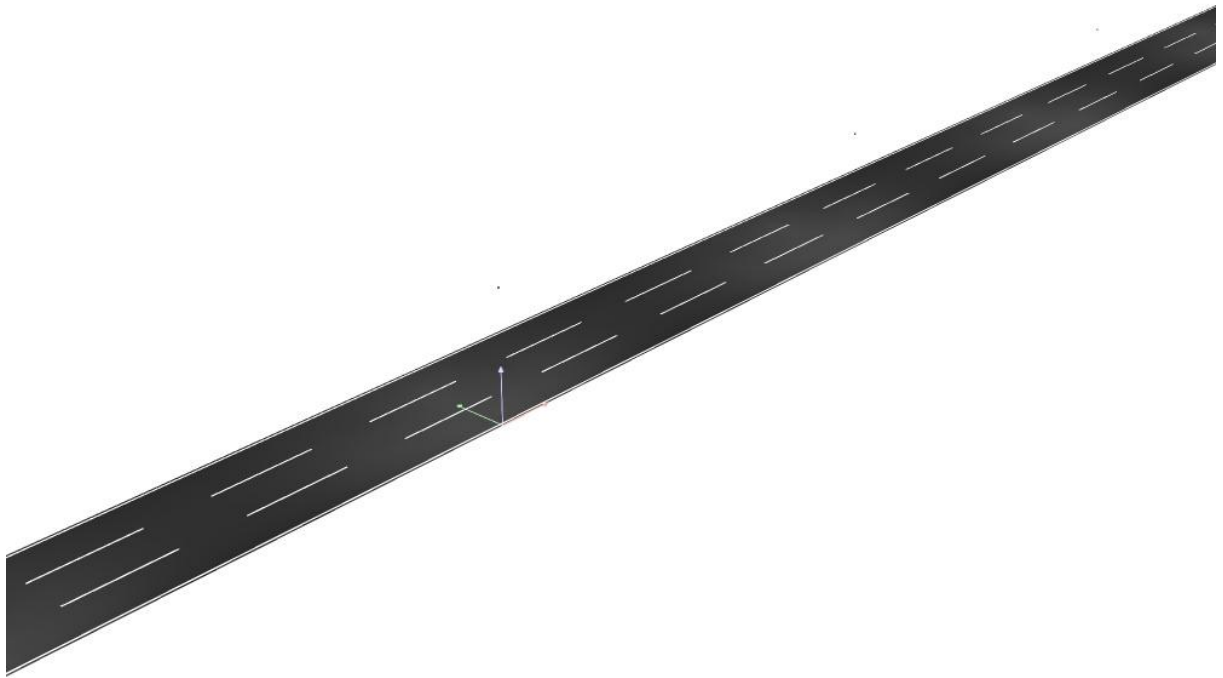
(All lighting performance requirements are met.)

	L_{av} [cd/m ²]	U0	UI	TI [%]	SR
Calculated values:	0.83	0.43	0.80	13	0.58
Required values according to class:	≥ 0.75	≥ 0.40	≥ 0.60	≤ 15	≥ 0.50
Fulfilled/Not fulfilled:	✓	✓	✓	✓	✓



Operator
Telephone
Fax
e-Mail

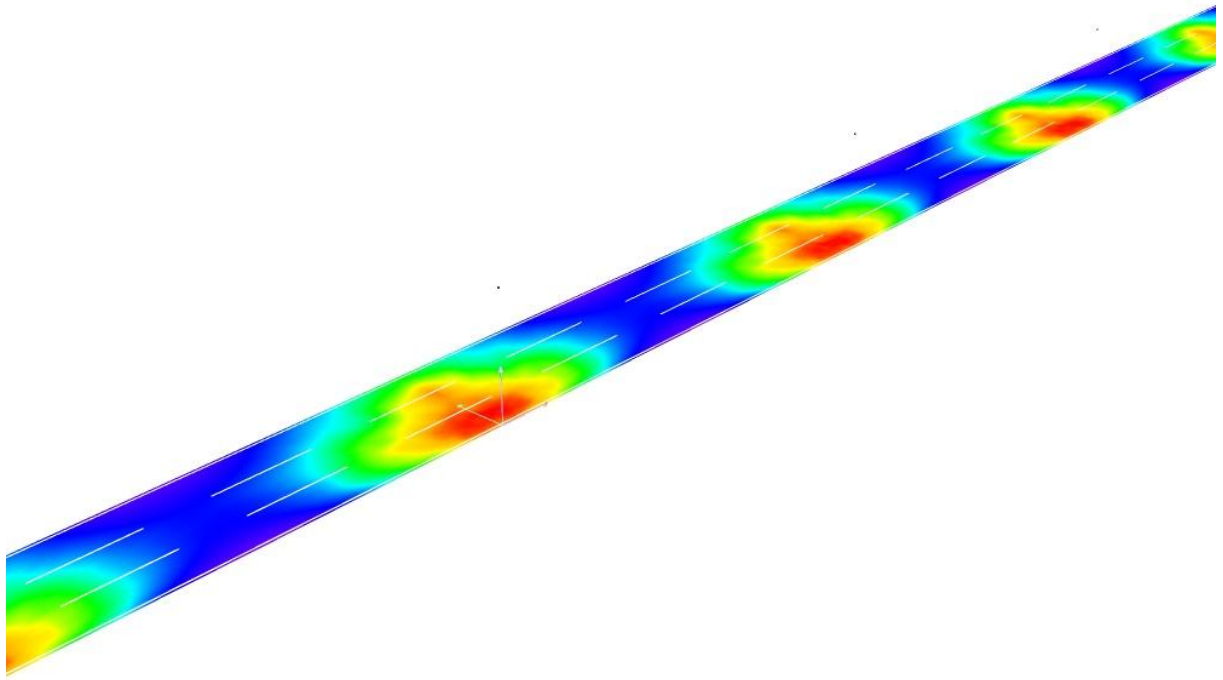
街道 1 / 3D Rendering





Operator
Telephone
Fax
e-Mail

街道 1 / False Color Rendering

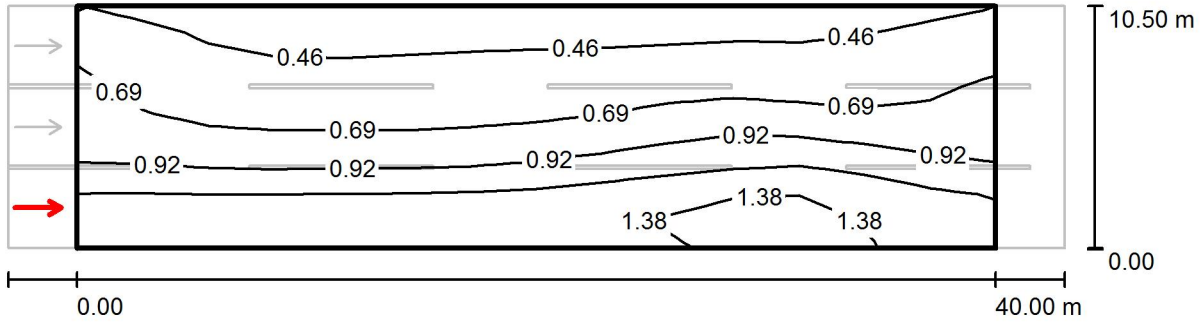


0 3.75 7.50 11.25 15 18.75 22.50 26.25 30 lx



Operator
Telephone
Fax
e-Mail

街道 1 / 评估区域 道路 1 / 观察器 1 / Isolines (L)



Values in Candela/m², Scale 1 : 329

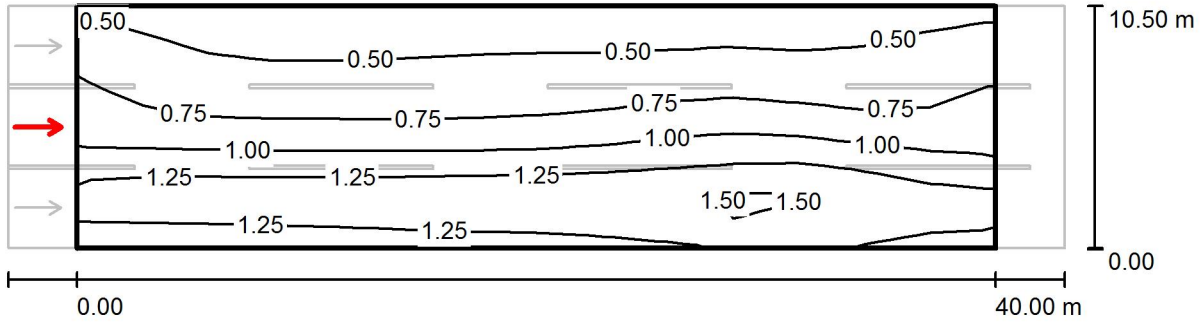
Grid: 14 x 9 Points
Observer Position: (-60.000 m, 1.750 m, 1.500 m)
tarmac: R3, q0: 0.070

	L_{av} [cd/m ²]	U0	UI	TI [%]
Calculated values:	0.83	0.45	0.83	13
Required values according to class ME4a:	≥ 0.75	≥ 0.40	≥ 0.60	≤ 15
Fulfilled/Not fulfilled:	✓	✓	✓	✓



Operator
Telephone
Fax
e-Mail

街道 1 / 评估区域 道路 1 / 观察器 2 / Isolines (L)



Values in Candela/m², Scale 1 : 329

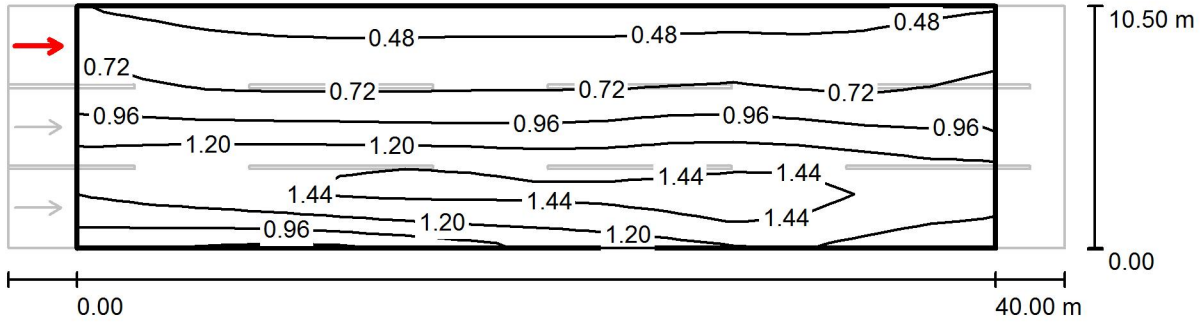
Grid: 14 x 9 Points
Observer Position: (-60.000 m, 5.250 m, 1.500 m)
tarmac: R3, q0: 0.070

	L_{av} [cd/m ²]	U0	UI	TI [%]
Calculated values:	0.90	0.43	0.81	11
Required values according to class ME4a:	≥ 0.75	≥ 0.40	≥ 0.60	≤ 15
Fulfilled/Not fulfilled:	✓	✓	✓	✓



Operator
Telephone
Fax
e-Mail

街道 1 / 评估区域 道路 1 / 观察器 3 / Isolines (L)



Values in Candela/m², Scale 1 : 329

Grid: 14 x 9 Points
Observer Position: (-60.000 m, 8.750 m, 1.500 m)
tarmac: R3, q0: 0.070

	L_{av} [cd/m ²]	U0	UI	TI [%]
Calculated values:	0.96	0.43	0.80	6
Required values according to class ME4a:	≥ 0.75	≥ 0.40	≥ 0.60	≤ 15
Fulfilled/Not fulfilled:	✓	✓	✓	✓