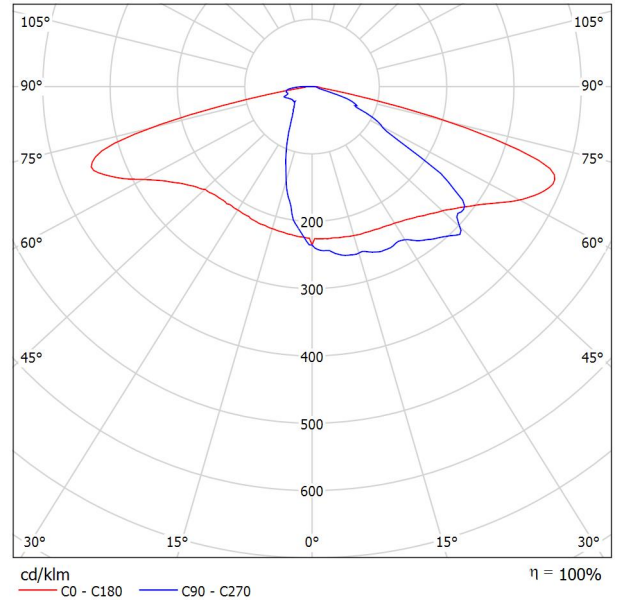


Operator  
 Telephone  
 Fax  
 e-Mail

## Damin EÖNÇ-757 / Luminaire Data Sheet

See our luminaire catalog for an image of the luminaire.

Luminous emittance 1:



Luminaire classification according to CIE: 100  
 CIE flux code: 31 64 93 100 100

Due to missing symmetry properties, no UGR table can be displayed for this luminaire.

Operator  
Telephone  
Fax  
e-Mail

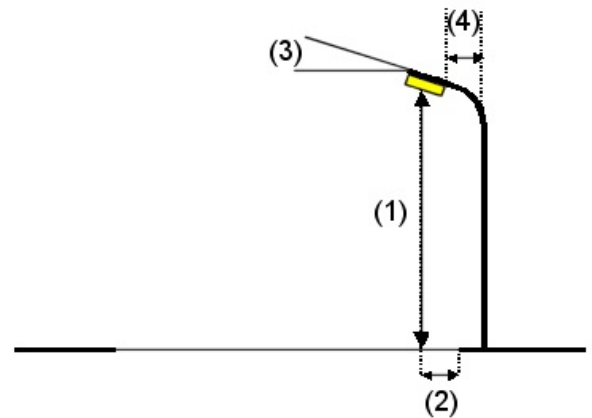
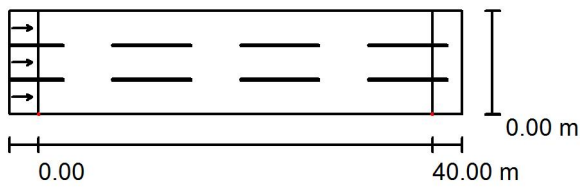
街道 1 / Planning data

Street Profile

道路 1 (Width: 10.500 m, Number of lanes: 3, tarmac: R3, q0: 0.070)

Maintenance factor: 0.80

Luminaire Arrangements



Luminaire:	Damin EÖNÇ-757
Luminous flux (Luminaire):	14001 lm
Luminous flux (Lamps):	14000 lm
Luminaire Wattage:	1.0 W
Arrangement:	Single row, bottom
Pole Distance:	40.000 m
Mounting Height (1):	10.000 m
Height:	9.900 m
Overhang (2):	0.000 m
Boom Angle (3):	0.0 °
Boom Length (4):	0.000 m

Maximum luminous intensities	
at 70°:	454 cd/klm
at 80°:	88 cd/klm
at 90°:	15 cd/klm

Any direction forming the specified angle from the downward vertical, with the luminaire installed for use.

No luminous intensities above 90°.

Arrangement complies with luminous intensity class G3.

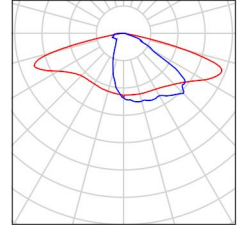
Arrangement complies with glare index class D.2.

Operator  
 Telephone  
 Fax  
 e-Mail

**街道 1 / Luminaire parts list**

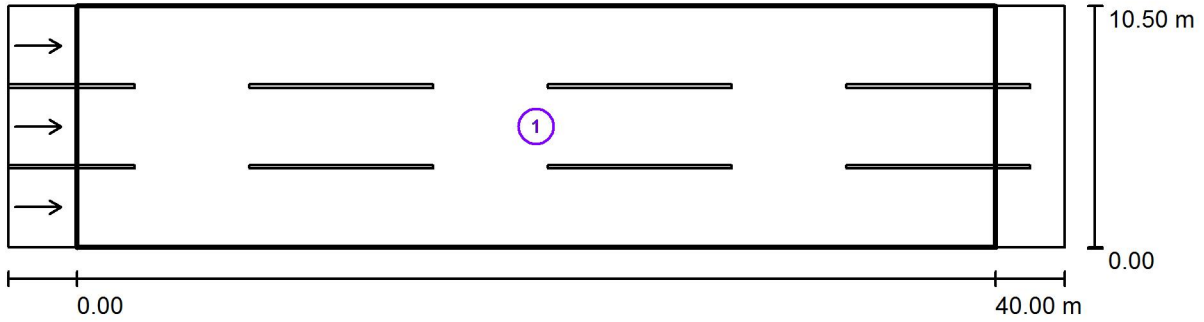
Damin EÖNÇ-757 (Type 1)  
 Article No.: Damin  
 Luminous flux (Luminaire): 14001 lm  
 Luminous flux (Lamps): 14000 lm  
 Luminaire Wattage: 1.0 W  
 Luminaire classification according to CIE: 100  
 CIE flux code: 31 64 93 100 100  
 Fitting: 1 x User defined (Correction Factor 1.000).

See our luminaire catalog for an image of the luminaire.



Operator  
Telephone  
Fax  
e-Mail

街道 1 / Photometric Results



Maintenance factor: 0.80

Scale 1:329

Calculation Field List

- 1 评估区域 道路 1  
Length: 40.000 m, Width: 10.500 m  
Grid: 14 x 9 Points  
Accompanying Street Elements: 道路 1.  
tarmac: R3, q0: 0.070  
Selected Lighting Class: ME4a

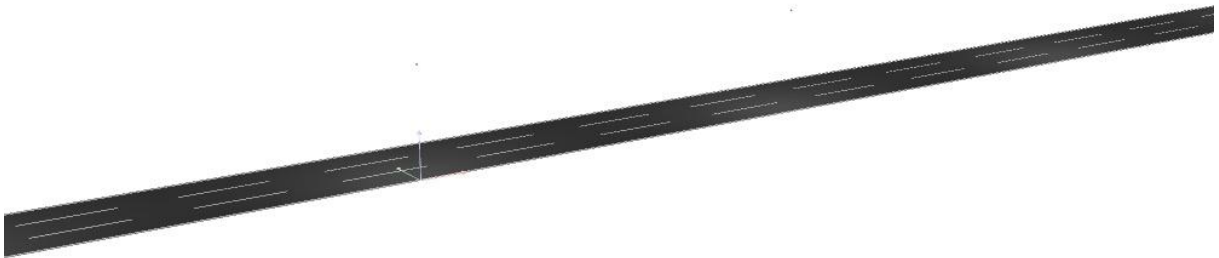
(All lighting performance requirements are met.)

	$L_{av}$ [cd/m <sup>2</sup> ]	U0	UI	TI [%]	SR
Calculated values:	0.76	0.42	0.77	14	0.67
Required values according to class:	≥ 0.75	≥ 0.40	≥ 0.60	≤ 15	≥ 0.50
Fulfilled/Not fulfilled:	✓	✓	✓	✓	✓

Operator  
Telephone  
Fax  
e-Mail

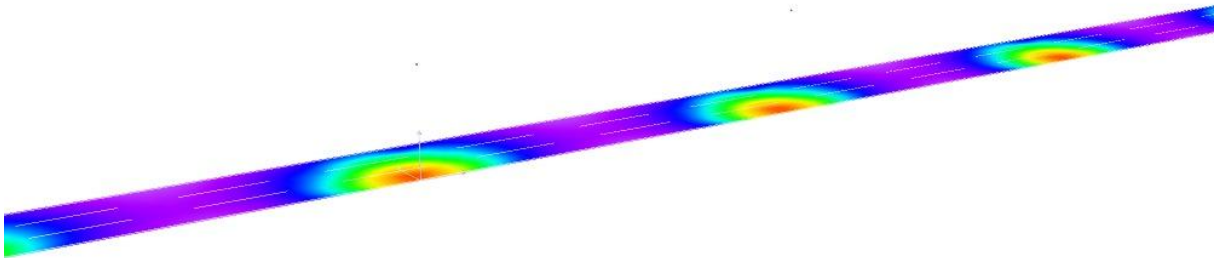
街道 1 / 3D Rendering

---



Operator  
Telephone  
Fax  
e-Mail

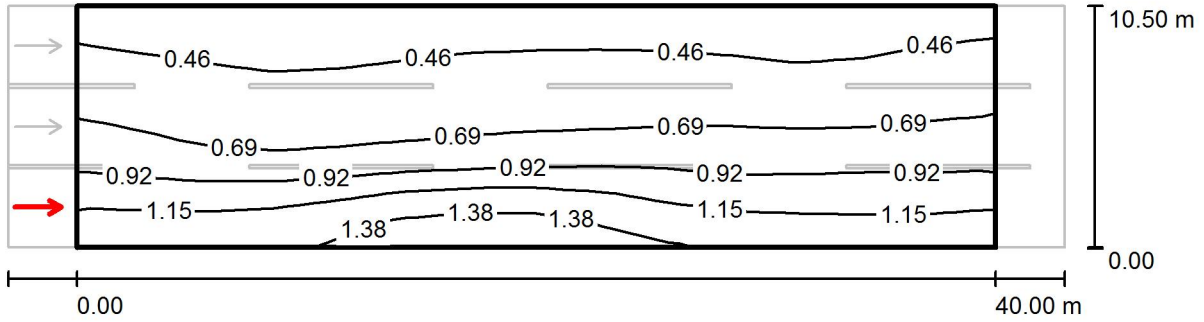
街道 1 / False Colour Rendering



0 3.75 7.50 11.25 15 18.75 22.50 26.25 30 lx

Operator  
Telephone  
Fax  
e-Mail

街道 1 / 评估区域 道路 1 / 观察器 1 / Isolines (L)



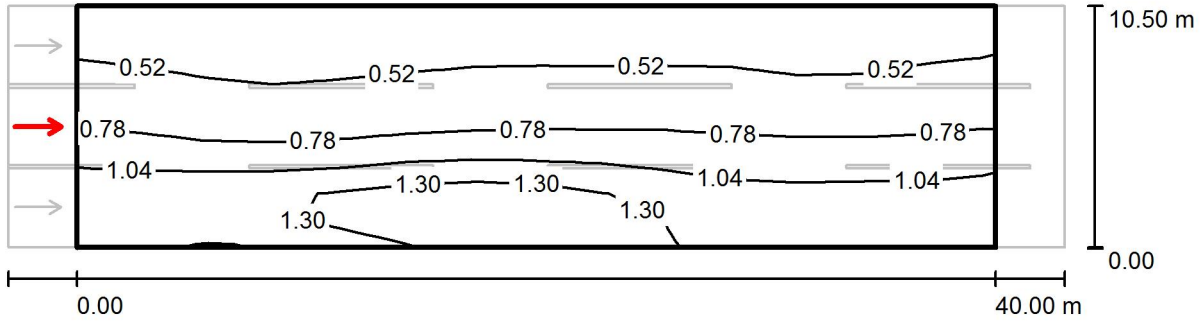
Values in Candela/m<sup>2</sup>, Scale 1 : 329

Grid: 14 x 9 Points  
Observer Position: (-60.000 m, 1.750 m, 1.500 m)  
tarmac: R3, q0: 0.070

	$L_{av}$ [cd/m <sup>2</sup> ]	U0	UI	TI [%]
Calculated values:	0.76	0.45	0.77	14
Required values according to class ME4a:	≥ 0.75	≥ 0.40	≥ 0.60	≤ 15
Fulfilled/Not fulfilled:	✓	✓	✓	✓

Operator  
Telephone  
Fax  
e-Mail

街道 1 / 评估区域 道路 1 / 观察器 2 / Isolines (L)



Values in Candela/m<sup>2</sup>, Scale 1 : 329

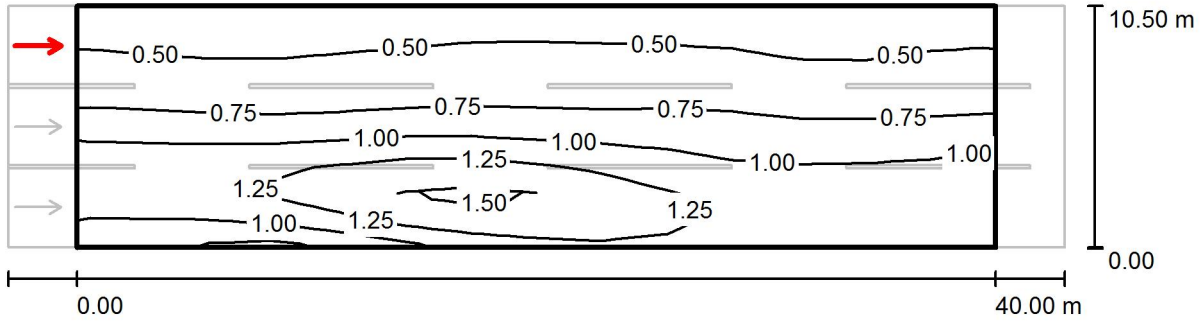
Grid: 14 x 9 Points  
Observer Position: (-60.000 m, 5.250 m, 1.500 m)  
tarmac: R3, q0: 0.070

	$L_{av}$ [cd/m <sup>2</sup> ]	U0	UI	TI [%]
Calculated values:	0.82	0.42	0.88	10
Required values according to class ME4a:	≥ 0.75	≥ 0.40	≥ 0.60	≤ 15
Fulfilled/Not fulfilled:	✓	✓	✓	✓



Operator  
Telephone  
Fax  
e-Mail

街道 1 / 评估区域 道路 1 / 观察器 3 / Isolines (L)



Values in Candela/m<sup>2</sup>, Scale 1 : 329

Grid: 14 x 9 Points  
Observer Position: (-60.000 m, 8.750 m, 1.500 m)  
tarmac: R3, q0: 0.070

	$L_{av}$ [cd/m <sup>2</sup> ]	U0	UI	TI [%]
Calculated values:	0.86	0.42	0.87	6
Required values according to class ME4a:	≥ 0.75	≥ 0.40	≥ 0.60	≤ 15
Fulfilled/Not fulfilled:	✓	✓	✓	✓