



# ASAHI OPTICS LIMITED

801 Yueshang Chanye Building, No.1 of TangKeng LuKou Dong , GuanTian, Bao'Shi Dong Road,Shiyan,Bao'an,Shenzhen 518108, China. Tel:+86-755-85241681 Email: [optics@asahi-optics.com](mailto:optics@asahi-optics.com) [www.asahi-optics.com](http://www.asahi-optics.com)

---

## Specification

**Product:** Street light lens

**MODEL:** AJST50D10LEDT2M  
-CUTOFF

**DATE:** 2023-12-5

## ASAHI OPTICS LIMITED

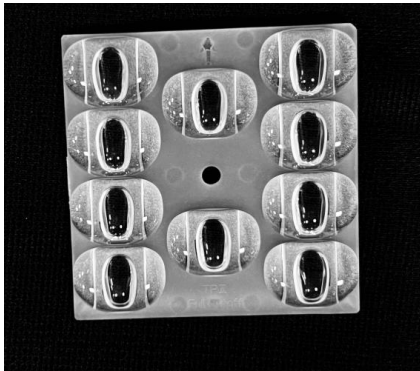

2/F SHALING BUILDING, SHAJING, BAO'AN SHENZHEN' CHINA  
TEL:+86-755-85241681 FAX:+86-755-85241681-0 EMAIL: [OPTICS@ASAHI-OPTICS.COM](mailto:OPTICS@ASAHI-OPTICS.COM)

Prepared by	Checked by	Approved by
T.C.SUN	H.J.HU	Z.Y.LIU



# ASAHI OPTICS LIMITED

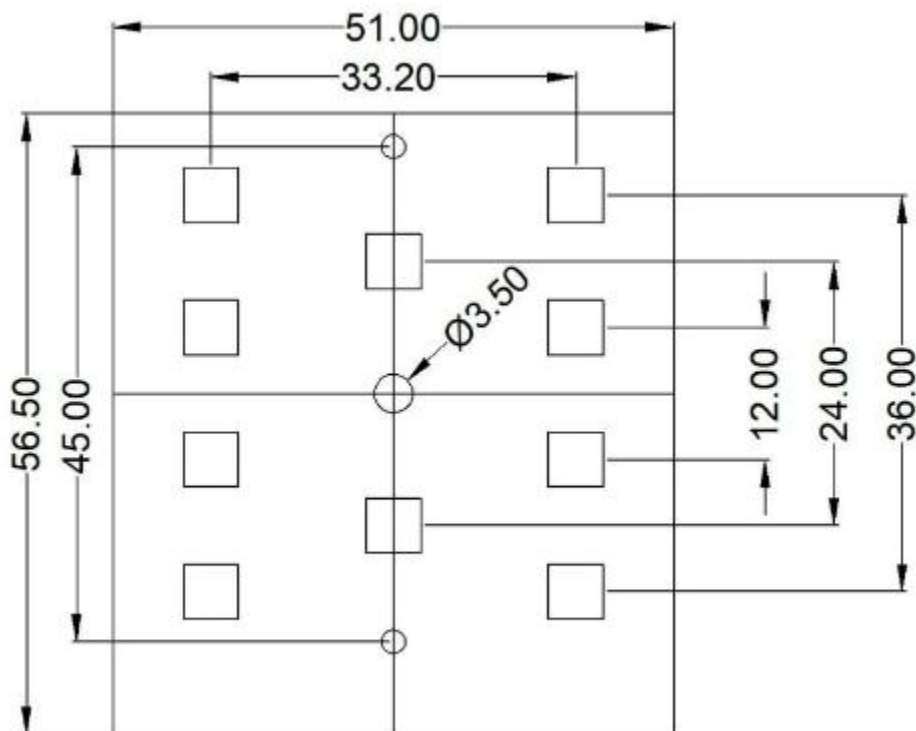
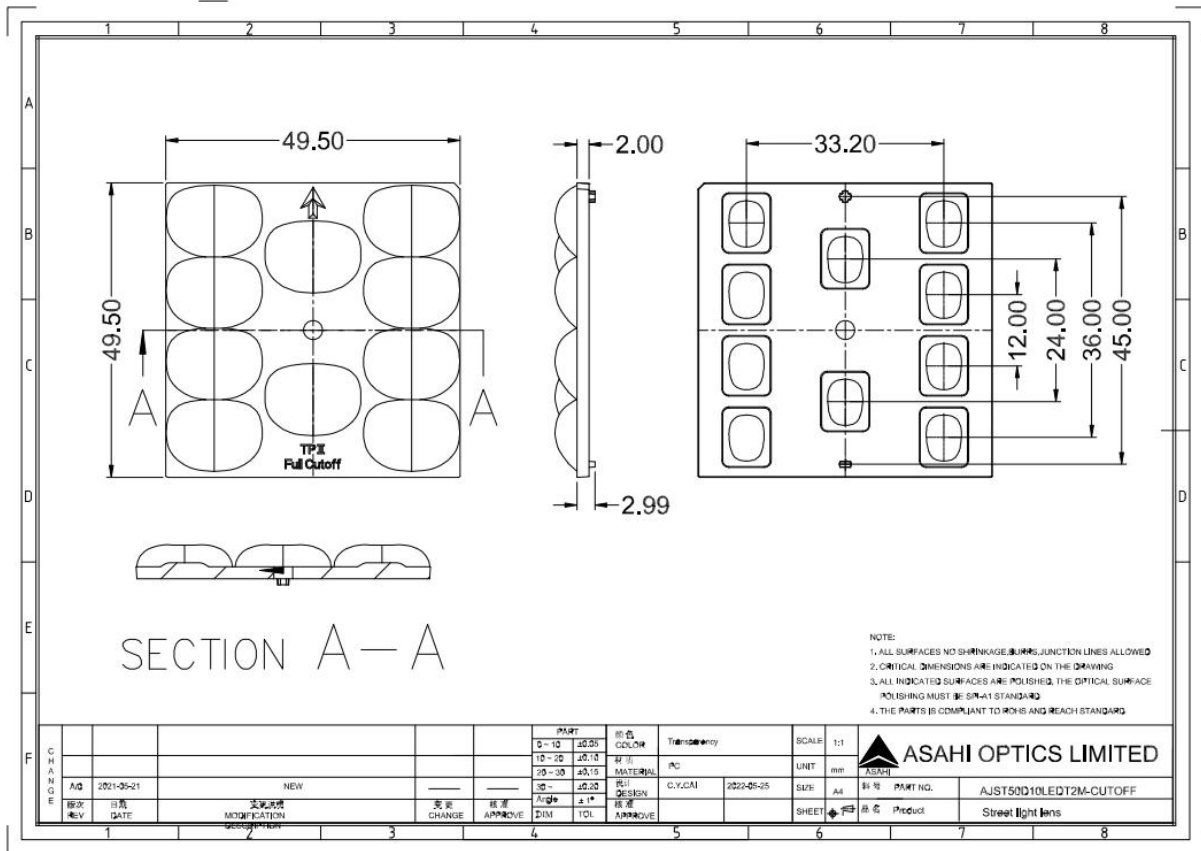
801 Yueshang Chanye Building, No.1 of TangKeng LuKou Dong , GuanTian, Bao'Shi Dong Road,Shiyan,Bao'an,Shenzhen 518108, China. Tel:+86-755-85241681 Email: [optics@asahi-optics.com](mailto:optics@asahi-optics.com) [www.asahi-optics.com](http://www.asahi-optics.com)

<b>Part Number</b>	<b>AJST50D10LEDT2M-CUTOFF</b>
<b>Picture</b>	
<b>Dimension</b>	<b>50.0*6.7mm</b>
<b>LED Type</b>	 5050 灯珠
<b>Beam Angle</b>	<b>TYPEIII Full-cutoff</b>
<b>Efficiency</b>	<b>&gt;93%</b>
<b>Material</b>	<b>PC</b>



# ASAHI OPTICS LIMITED

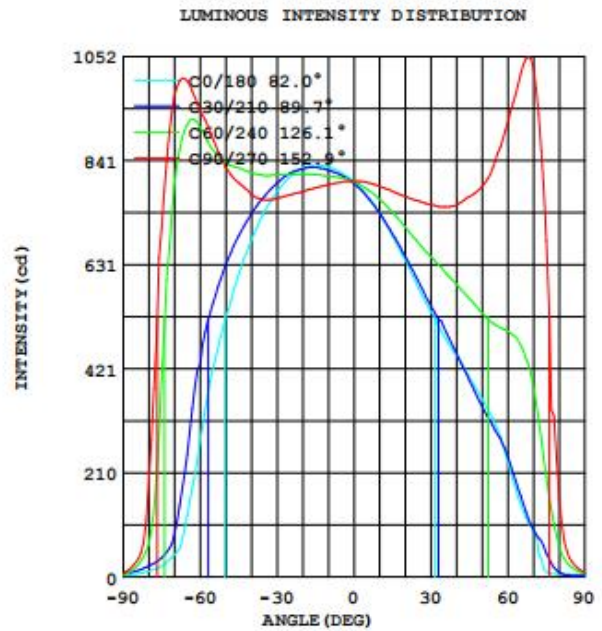
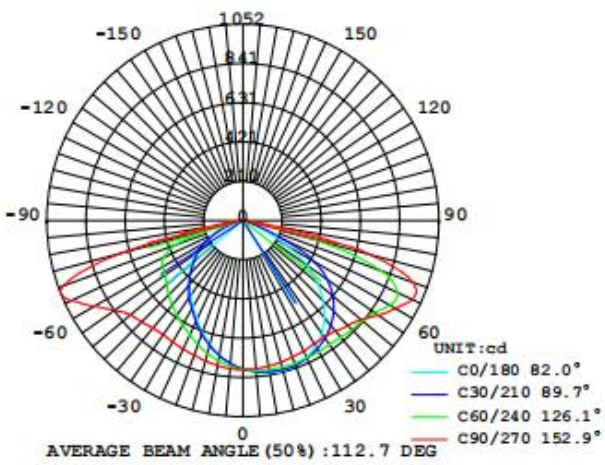
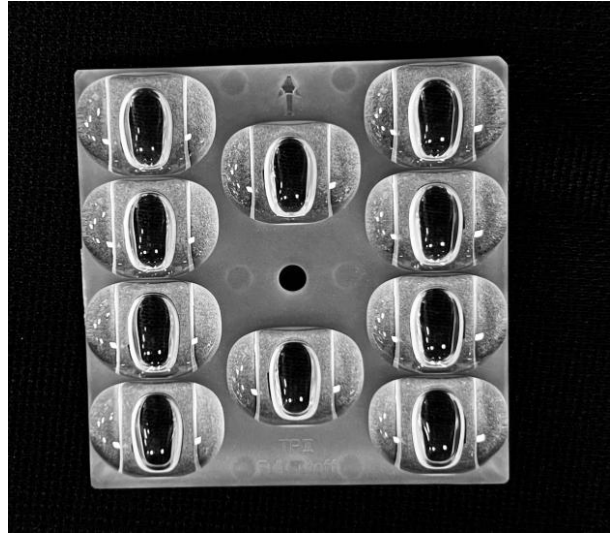
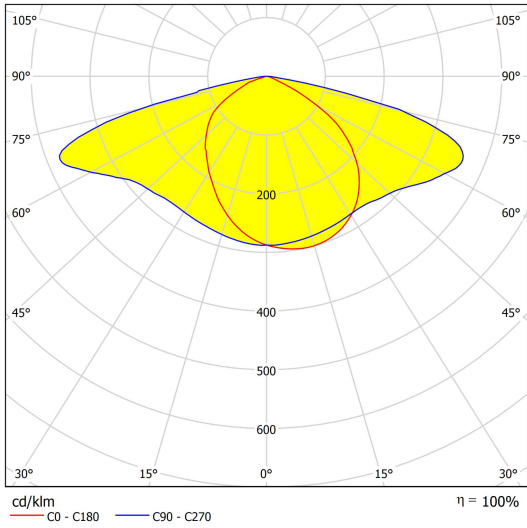
801 Yueshang Chanye Building, No.1 of TangKeng LuKou Dong , GuanTian, Bao'Shi Dong Road,Shiyan,Bao'an,Shenzhen 518108, China. Tel:+86-755-85241681 Email: [optics@asahi-optics.com](mailto:optics@asahi-optics.com) [www.asahi-optics.com](http://www.asahi-optics.com)





# ASAHI OPTICS LIMITED

801 Yueshang Chanye Building, No.1 of TangKeng LuKou Dong , GuanTian, Bao'Shi Dong Road,Shiyan,Bao'an,Shenzhen 518108, China. Tel:+86-755-85241681 Email: [optics@asahi-optics.com](mailto:optics@asahi-optics.com) [www.asahi-optics.com](http://www.asahi-optics.com)





# ASAHI OPTICS LIMITED

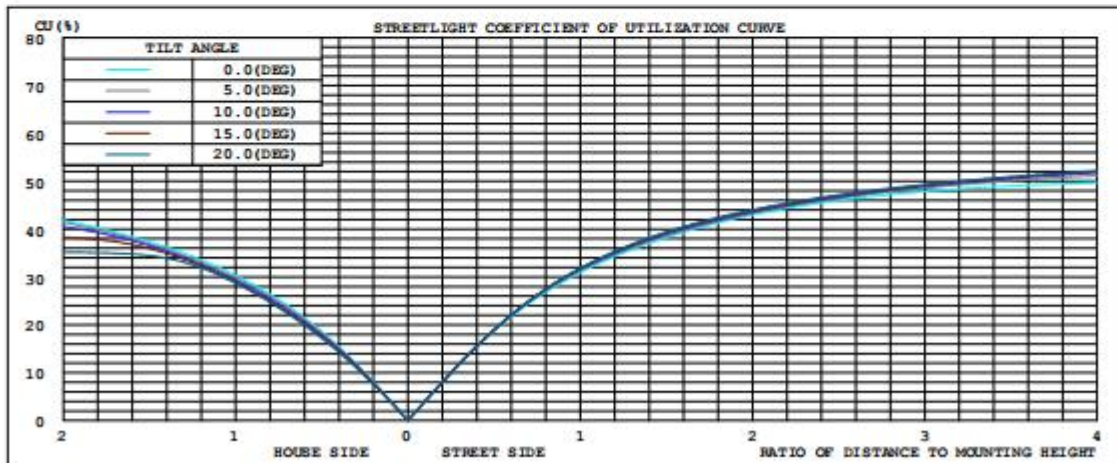
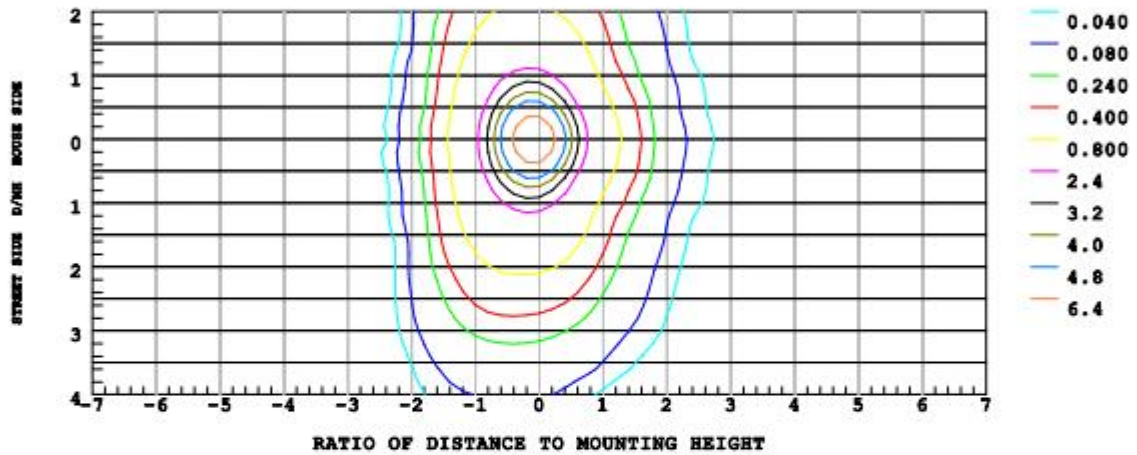
801 Yueshang Chanye Building, No.1 of TangKeng LuKou Dong , GuanTian, Bao'Shi Dong Road,Shiyan,Bao'an,Shenzhen 518108, China. Tel:+86-755-85241681 Email: [optics@asahi-optics.com](mailto:optics@asahi-optics.com) [www.asahi-optics.com](http://www.asahi-optics.com)

## ISOLUX DIAGRAM

Report number:

MANUFACTURER:		
Address:		
NAME:	TYPE:	WEIGHT:
SPECIFICATION:	DIMENSION:	SERIAL No.:

ILLUMINANCE AT MH=10 m, Enadir = 7.98 lx



Test System:HOPOO HPG1800  
 Temperature:25.3DEG  
 Operators:  
 Test Date:2023年11月24日

Test Set: 5.0deg/s C-Gamma (TYPE C)  
 Humidity:65.0%  
 Test Distance:10.000 m  
 Remarks: