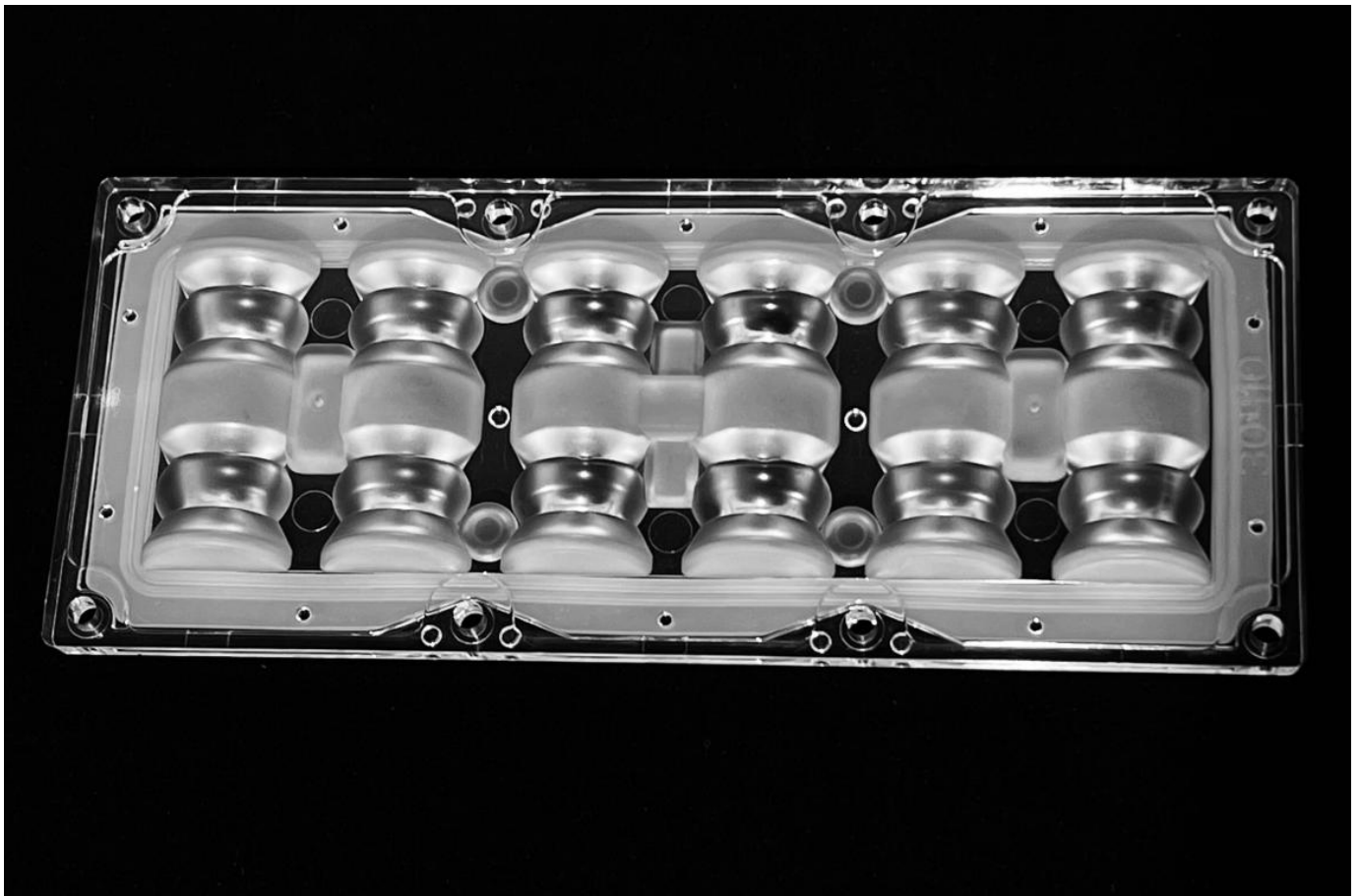




ASAHI OPTICS LIMITED

801 Yueshang Chanye Building, No.1 of TangKeng LuKou Dong , GuanTian, Bao'Shi Dong Road,Shiyan,Bao'an, Shenzhen 518108, China. Tel:+86-755-85241681 Email: optics@asahi-optics.com www.asahi-optics.com

▲ 6x2 30x110° LED LENS SPECIFICATION



▲ LED Type: Lumileds 5050

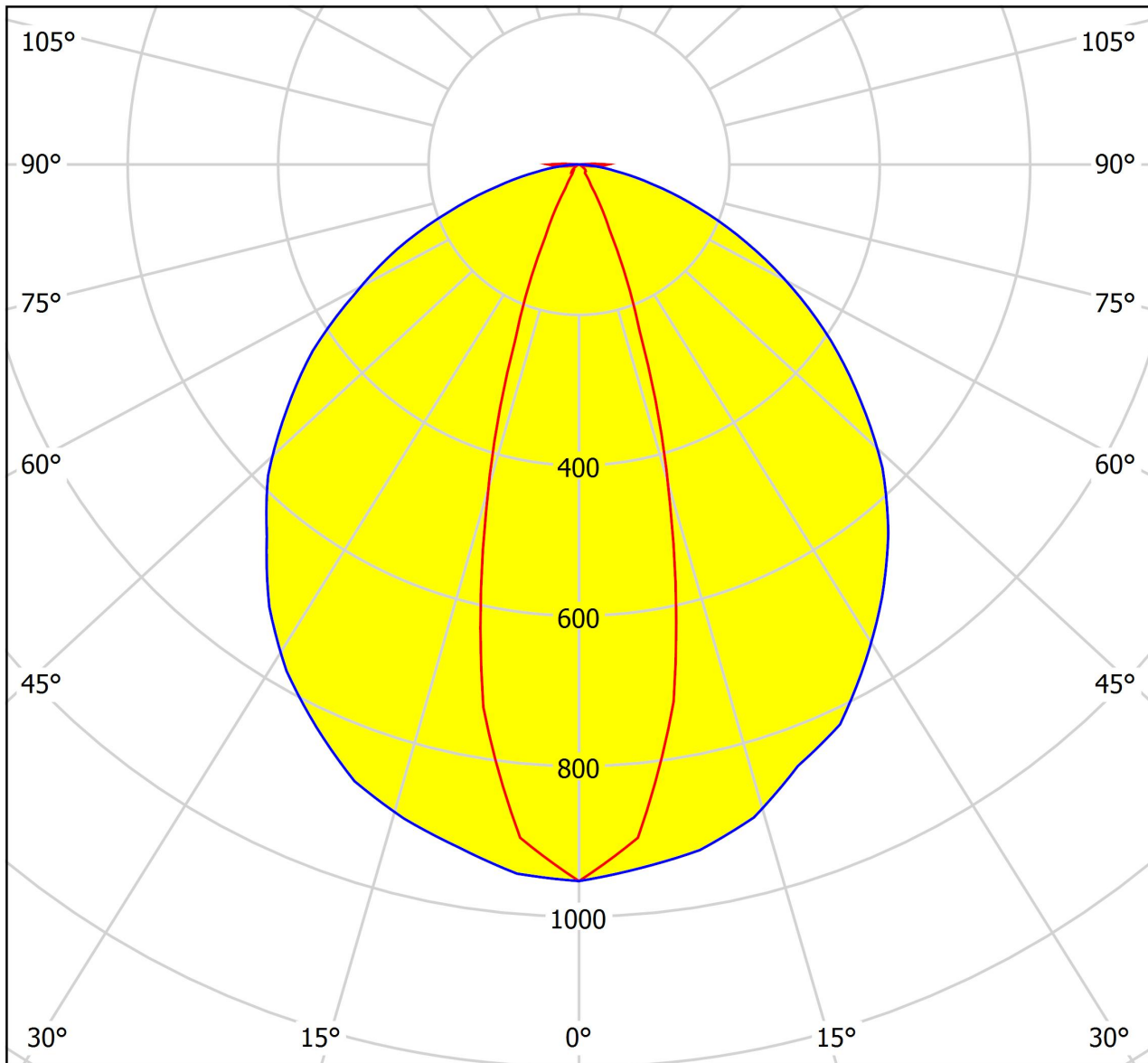




ASAHI OPTICS LIMITED

801 Yueshang Chanye Building, No.1 of TangKeng LuKou Dong , GuanTian, Bao'Shi Dong Road,Shiyan,Bao'an, Shenzhen 518108, China. Tel:+86-755-85241681 Email: optics@asahi-optics.com www.asahi-optics.com

▲ 6x2 30x110° LED LENS Light Distribution



cd/klm

— C0 - C180 — C90 - C270


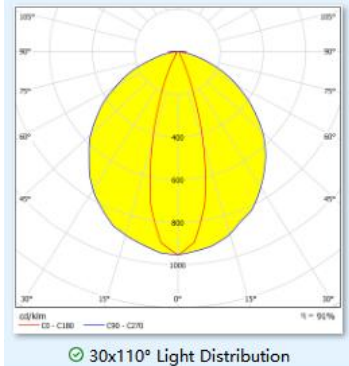
$\eta = 91\%$



ASAHI OPTICS LIMITED

801 Yueshang Chanye Building, No.1 of TangKeng LuKou Dong , GuanTian, Bao'Shi Dong Road,Shiyan,Bao'an, Shenzhen 518108, China. Tel:+86-755-85241681 Email: optics@asahi-optics.com www.asahi-optics.com

▲ Photometric data (Simulated)

Model No.	Picture	Beam Angle	Simulated IES
ALHB173D12LED30110G		30x110°	 <p>30x110° Light Distribution</p>



ASAHI OPTICS LIMITED

801 Yueshang Chanye Building, No.1 of TangKeng LuKou Dong , GuanTian, Bao'Shi Dong Road,Shiyan,Bao'an, Shenzhen 518108, China. Tel:+86-755-85241681 Email: optics@asahi-optics.com www.asahi-optics.com

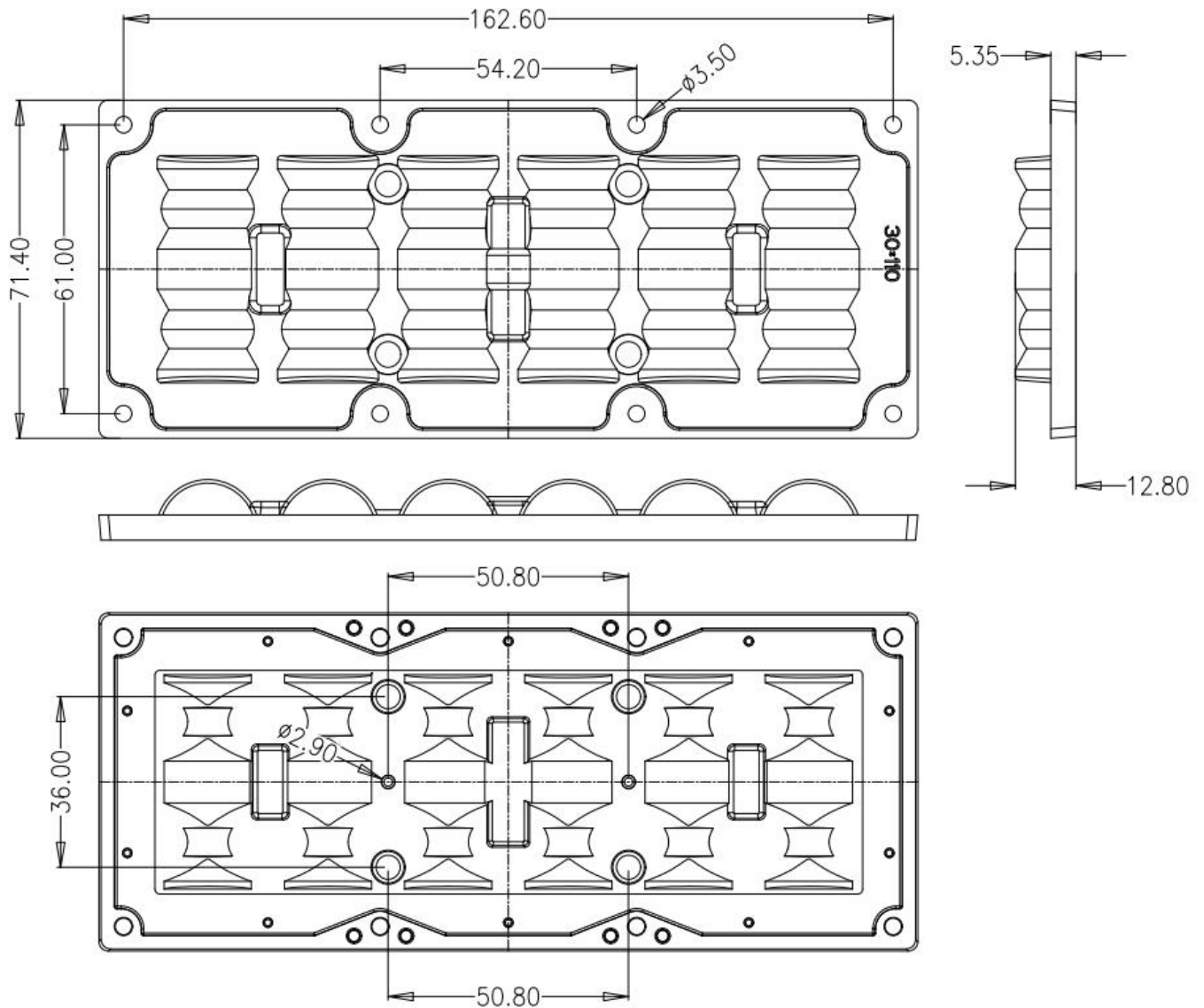
▲ 1.Mechanical Specification

● 1. Fixing Method

Glue Screw Tape Fixing-ring Frame

▲ 2. Lens Dimension

● Model No.: ALHB173D12LED30110G

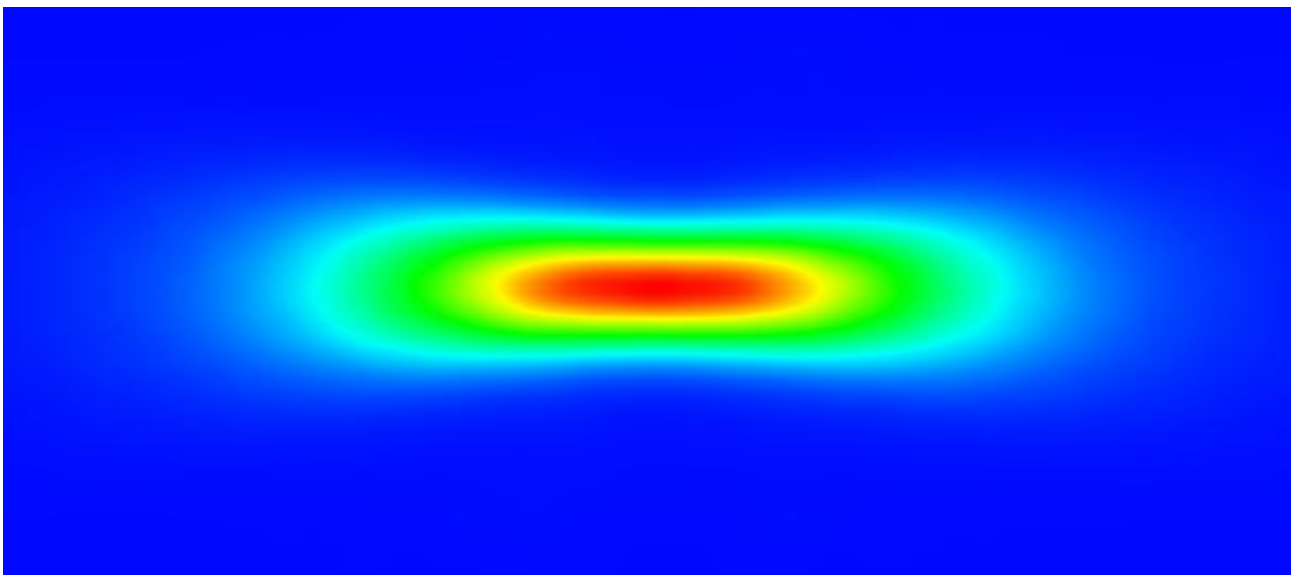




ASAHI OPTICS LIMITED

801 Yueshang Chanye Building, No.1 of TangKeng LuKou Dong , GuanTian, Bao'Shi Dong Road,Shiyan,Bao'an,
Shenzhen 518108, China. Tel:+86-755-85241681 Email: optics@asahi-optics.com www.asahi-optics.com

▲ Total—Irradiance map for incident flux color / Black (1m)





ASAHI OPTICS LIMITED

801 Yueshang Chanye Building, No.1 of TangKeng LuKou Dong , GuanTian, Bao'Shi Dong Road,Shiyan,Bao'an, Shenzhen 518108, China. Tel:+86-755-85241681 Email: optics@asahi-optics.com www.asahi-optics.com

▲ Features & Typical Applications

- High efficiency by PMMA & PC material and luminance uniformity
- 6x2 lens with a wide variety of different beams,suitable for outdoor and indoor lighting
- Optimized optical design with high light intensity and good durability of lens life time

▲ Material Information

- Lens Material: Teijin PC 1250Z/ Mitsubishi PMMA VH001
 - PC Operating Temperate Range $-40^{\circ}\text{C}+110^{\circ}\text{C}$ (upper limit $+120^{\circ}\text{C}$)
 - PMMA Operating Temperate Range $+40^{\circ}\text{C}+90^{\circ}\text{C}$
- * Average transmittance in visible spectrum 400nm-700nm $>90\%$

▲ Usage and Maintenance

- 1) If necessary, clean lenses with mild soap, water, and softening cloth.
- 2) Never use any industrial solvent to clean lens, such as cleaning Solvent, Alcohol Sulfuric acid, Ammonia, Urea, Mineral oil, Petrol
- 3) Alternatively the following environment is recommended: Storage temperature: -40°C to $+70^{\circ}\text{C}$, Humidity:30% to 95% HR mar.