



# Specification

**Product: Single lens**

**MODEL: AYS26D1060G**

**DATE: 2013-8-27**

## **ASAHI OPTICS LIMITED**

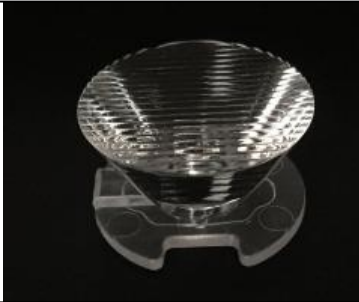















2/F SHALING BUILDING, SHAJING, BAO'AN SHENZHEN' CHINA  
TEL: +86-755-85241681 FAX: +86-755-83877899 EMAIL: [OPTICS@ASAHI-OPTICS.COM](mailto:OPTICS@ASAHI-OPTICS.COM)

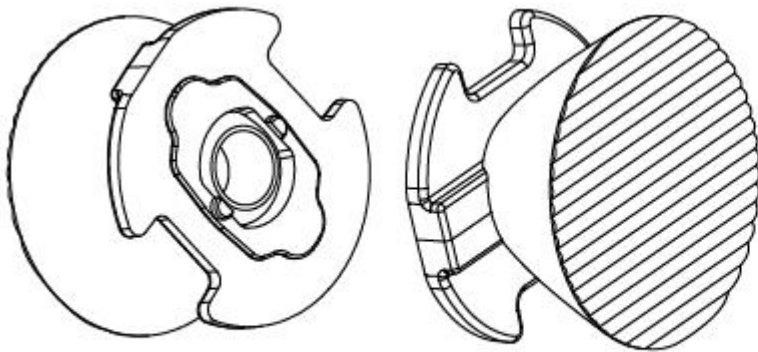
Prepared by	Checked by	Approved by
T.C.SUN	H.J.HU	Z.Y.LIU



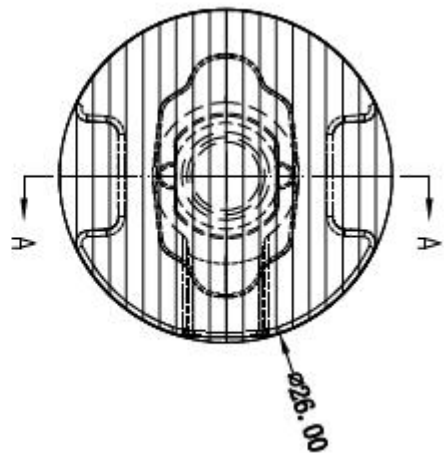
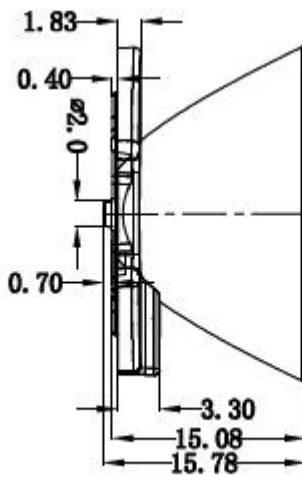
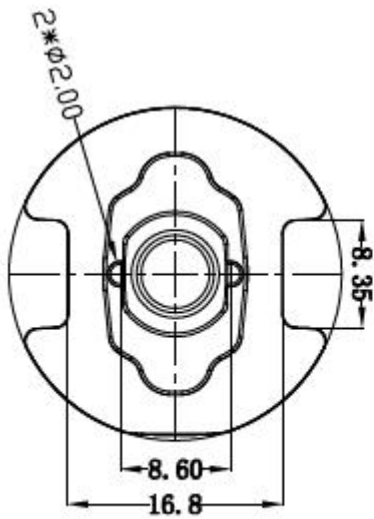
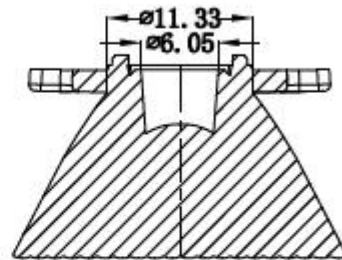
# Index

1. Cover
2. Index
3. Product description
4. Drawing
5. Test report
6. Material certificate

<b>Part Number</b>	<b>AYS26D1060G</b>										
<b>Picture</b>											
<b>Dimension</b>	<b>26.0*15.78mm</b>										
<b>LED Type</b>	<table border="0"> <tr> <td></td> <td>XPE/XPG</td> </tr> <tr> <td></td> <td>NVSXX19A/B</td> </tr> <tr> <td></td> <td>SSL80/square</td> </tr> <tr> <td></td> <td>Federal3535</td> </tr> <tr> <td></td> <td>H35C1</td> </tr> </table>		XPE/XPG		NVSXX19A/B		SSL80/square		Federal3535		H35C1
	XPE/XPG										
	NVSXX19A/B										
	SSL80/square										
	Federal3535										
	H35C1										
<b>Beam Angle</b>	<b>10°*60°</b>										
<b>Efficiency</b>	<b>88%</b>										
<b>Material</b>	<b>Lens PMMA, Holder PC</b>										

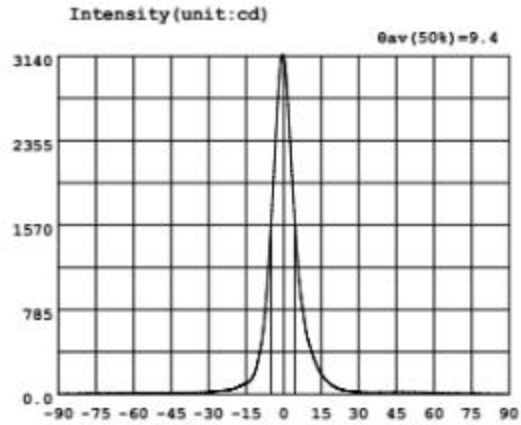
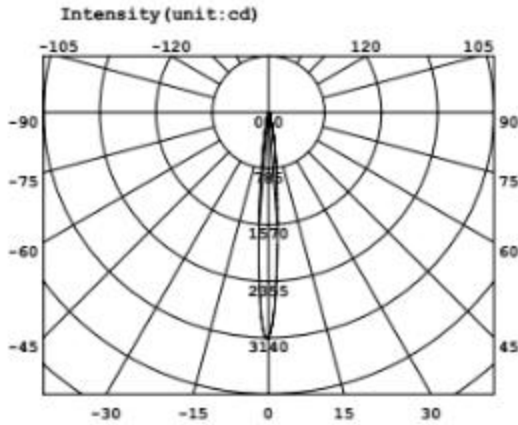


SECTION A-A





GO1900L GONIOPHOTOMETER Test Report Page 1 Of 2



Intensity data:(deg , cd) C0-180

Table with 12 columns (A, I, A, I, A, I, A, I, A, I, A, I) and 17 rows of intensity data for various angles from -90.0 to -60.0 degrees.

Electricity Parameter:

Current I: 0.6800A Power: 0.0W
Voltage V: 9.500V PF: 0.000

Optical Parameter (Distance=3.000m):

Equivalent Luminous flux: Φeff = 237.7lm Efficiency: Eff=0.00lm/W
Diffuse angle: @ (25%): 14.9deg @ (50%): 9.4deg @ (75%): 5.8deg @ (50%): 9.4deg
Imax=3131cd (C=0.0deg,G=0.0deg) C0-180Plane Imax= 3131cd(G=0.0deg)
C0-180Plane IO= 3131cd

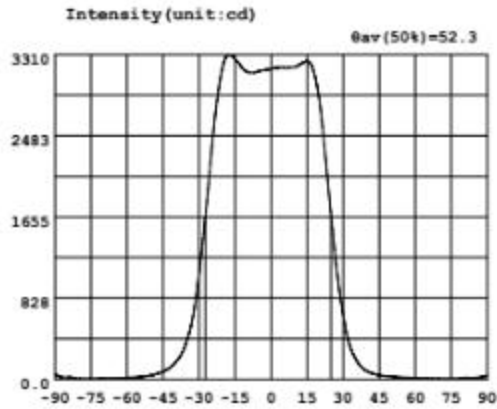
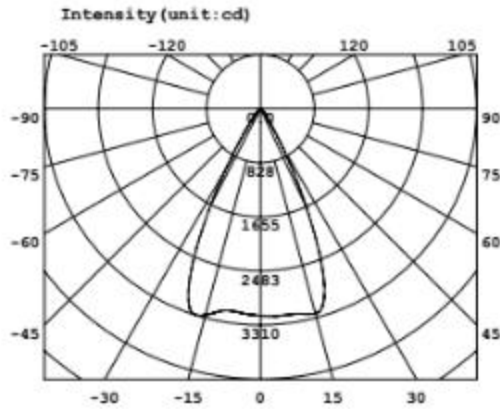
Lamp Type:single lens
Tester:ASAHI
Temperature:25.3deg
Manufacturer:ASAHI

Luminaires Type:CREE XPG
Test Date:
Humidity:65%
Remarks:



EVERFINE 远方  
www.everfine.CN

GO1900L GONIOPHOTOMETER Test Report Page 1 Of 2



Intensity data: (deg , cd) C0-180

A	I	A	I	A	I	A	I	A	I	A	I
-90.0	52.92	-58.0	20.49	-26.0	2009	6.0	3179	38.0	116.1	70.0	11.23
-88.0	28.41	-56.0	21.95	-24.0	2530	8.0	3182	40.0	81.59	72.0	10.52
-86.0	21.27	-54.0	26.26	-22.0	2940	10.0	3185	42.0	60.97	74.0	10.00
-84.0	23.13	-52.0	32.12	-20.0	3203	12.0	3211	44.0	47.86	76.0	9.936
-82.0	13.69	-50.0	40.70	-18.0	3305	14.0	3238	46.0	37.95	78.0	10.88
-80.0	10.11	-48.0	53.27	-16.0	3289	16.0	3233	48.0	31.08	80.0	16.83
-78.0	9.548	-46.0	68.99	-14.0	3238	18.0	3115	50.0	28.75	82.0	17.55
-76.0	9.731	-44.0	90.10	-12.0	3176	20.0	2854	52.0	24.04	84.0	16.76
-74.0	10.24	-42.0	120.9	-10.0	3134	22.0	2428	54.0	21.13	86.0	19.41
-72.0	10.99	-40.0	165.9	-8.0	3127	24.0	1910	56.0	19.57	88.0	25.74
-70.0	12.18	-38.0	230.7	-6.0	3134	26.0	1410	58.0	17.60	90.0	38.61
-68.0	13.22	-36.0	326.6	-4.0	3148	28.0	985.5	60.0	16.05		
-66.0	14.18	-34.0	478.4	-2.0	3155	30.0	657.5	62.0	15.08		
-64.0	15.31	-32.0	718.0	0.0	3167	32.0	407.3	64.0	14.53		
-62.0	16.53	-30.0	1071	2.0	3175	34.0	264.6	66.0	13.25		
-60.0	18.16	-28.0	1510	4.0	3183	36.0	173.4	68.0	12.26		

Electricity Parameter:

Current I: 0.6800A Power: 0.0W  
Voltage V: 9.500V PF: 0.000

Optical Parameter (Distance=3.000m) :

Equivalent Luminous flux:  $\Phi_{eff} = 2427lm$  Efficiency:  $Eff=0.001m/W$   
Diffuse angle: @ (25%): 60.1deg @ (50%): 52.3deg @ (75%): 45.9deg @ (50%): 52.3deg  
Diffuse angle: @ (25%): 60.6deg @ (50%): 52.8deg @ (75%): 46.8deg @ (50%): 52.8deg  
Imax=3305cd (C=0.0deg,G=-18.0deg) C0-180Plane Imax= 3305cd(G=-18.0deg)

Lamp Type:single lens  
Tester:ASAHI  
Temperature:25.3deg  
Manufacturer:ASAHI

Luminaires Type:CREE XPG  
Test Date:  
Humidity:65%  
Remarks:





15-9-30

UL Certification

iq.ul.com

Component - Plastics [guide info]

E256044

MITSUBISHI RAYON POLYMER NANTONG CO LTD

NANTONG ECONOMIC & TECH DEV AREA, 6 GUANGZHOU RD, NANTONG JIANGSU 226009 CN

VH(ww)(f1), VH(f1), VHM(f1), VHS(f1)

Polymethyl Methacrylate (PMMA), "Shinkolite-P, Acrypet", furnished as pellets

Color	Min Thk (mm)	Flame Class	RTI		RTI		RTI Str
			HWI	HAI	Elec	Imp	
ALL	1.5	HB	4	0	50	50	50
	3.0	HB	3	0	50	50	50

Comparative Tracking Index (CTI): -

Inclined Plane Tracking (IPT): -

Dielectric Strength (kV/mm): -

Volume Resistivity (10<sup>X</sup> ohm-cm): -

High-Voltage Arc Tracking Rate (HVTR): -

High Volt, Low Current Arc Resis (D495): -

Dimensional Stability (%): -

(f1) - Suitable for outdoor use with respect to exposure to Ultraviolet Light, Water Exposure and Immersion in accordance with UL 746C.

(ww) - With or without a digit 0-3,5,7-9 incl.

ANSI/UL 94 small-scale test data does not pertain to building materials, furnishings and related contents. ANSI/UL 94 small-scale test data is intended solely for determining the flammability of plastic materials used in the components and parts of end-product devices and appliances, where the acceptability of the combination is determined by UL.

Report Date: 2013-01-02

Last Revised: 2013-01-23

© 2015 UL LLC



IEC and ISO Test Methods

Test Name	Test Method	Units	Thk (mm)	Value
Flammability	IEC 60695-11-10	Class (color)	1.5	HB75 (ALL)
			3.0	HB40 (ALL)
Glow-Wire Flammability (GWFI)	IEC 60695-2-12	C	-	-
Glow-Wire Ignition (GWIT)	IEC 60695-2-13	C	-	-
IEC Comparative Tracking Index	IEC 60112	Volts (Max)	-	-
IEC Ball Pressure	IEC 60695-10-2	C	-	-
ISO Heat Deflection (1.80 MPa)	ISO 75-2	C	-	-
ISO Tensile Strength	ISO 527-2	MPa	-	-
ISO Flexural Strength	ISO 178	MPa	-	-
ISO Tensile Impact	ISO 8256	kJ/m <sup>2</sup>	-	-
ISO Izod Impact	ISO 180	kJ/m <sup>2</sup>	-	-
ISO Charpy Impact	ISO 179-2	kJ/m <sup>2</sup>	-	-